



SUBJECT SITE: Stratfield Elementary School
1407 Melville Avenue
Fairfield, CT 06825

CLIENT: Fairfield Public Schools
Maintenance Department
418 Meadow Street
Fairfield, CT 06824

INPSPECTION DATE: October 23, 2018

BIG EAST PROJECT #: 18591

LTD. LEAD BASED PAINT INSPECTION

Introduction

Big East Environmental conducted a limited lead based paint inspection at the above referenced subject site. The subject site serves as a public elementary school. The inspection was limited to readily accessible surfaces of areas of the school to be utilized by after school activity services as directed to us by the client.

Methods

Eric Gelhaus, Lead Inspector (license number #00252) performed the testing using a Heuresis pb200i XRF analyzer. The lead based paint survey typically test representative surfaces for each room/ area that include: four walls, ceiling, baseboard, door components, window components, and any miscellaneous items such as closets, cabinets, shelving, radiators, etc. If a building component tests positive for lead based paint, then all similar building components shall be assumed to contain lead-based paint, provided that the components are of the same type, age, and appearance. Dust wipe samples were also collected as part of the inspection. Dust wipe samples were collected from floor, window sill, and window troughs in the applicable rooms. Dust wipe samples were collected for analysis by Flame AAS (SW 846).

Findings

Connecticut Department of Public Health and US Department of Housing and Urban Development have set 1.0 milligrams/square centimeter (mg/cm²) or above as the definition of lead based paint (LBP). The total lead on the report is the reading of lead in all of the paint layers down to the substrate. A positive result (POS) is a confirmed reading at or above 1.0 mg/cm², a negative result (NEG) is a confirmed reading below 1.0 mg/cm².

- Lead-based paint HAS been identified.
- Defective lead based paint WAS NOT present.
- Dust wipe samples DID reveal levels of lead above action levels.

Table I – Surfaces Containing Lead Based Paint

ROOM	COMPONENT	SIDE	SUBSTRATE	CONDITION	COLOR
Staircase 3	Wall	A	Brick	Intact	White
Staircase 3	Wall	B	Brick	Intact	White
Staircase 3	Wall	C	Brick	Intact	White

1 Friction Surface

2 Chewable surface

Table II –Lead Dust Results

ID	LOCATION	SAMPLE AREA	RESULT	HUD Clearance Criteria
01	Hall 1 - Window Trough	1.302 ft ²	62.9 µg/ft ²	400 µg/ft ²
02	Hall 1 - Window Sill	2.344 ft ²	<4.3 µg/ft ²	250 µg/ft ²
03	Hall 1 - Floor	1.000 ft ²	<10 µg/ft ²	40 µg/ft ²
04	Bath 1 - Floor	1.000 ft ²	<10 µg/ft ²	40 µg/ft ²
05	Bath 2 - Floor	1.000 ft ²	<10 µg/ft ²	40 µg/ft ²
06	Stair 1 - Floor	1.000 ft ²	<10 µg/ft ²	40 µg/ft ²
07	Stair 2 - Floor	1.000 ft ²	<10 µg/ft ²	40 µg/ft ²
08	Hall 2 - Floor	1.000 ft ²	<10 µg/ft ²	40 µg/ft ²
09	Room 1 - Floor	1.000 ft ²	<10 µg/ft ²	40 µg/ft ²
10	Hall 3 - Floor	1.000 ft ²	<10 µg/ft ²	40 µg/ft ²
11	Hall 2 - Window Sill	1.000 ft ²	<10 µg/ft ²	250 µg/ft ²
12	Hall 2 - Window Trough	0.563 ft ²	221.7 µg/ft ²	400 µg/ft ²
13	Bath 3 - Floor	1.000 ft ²	<10 µg/ft ²	40 µg/ft ²
14	Bath 3 - Window Sill	1.417 ft ²	<7.1 µg/ft ²	250 µg/ft ²
15	Bath 4 - Floor	1.000 ft ²	<10 µg/ft ²	40 µg/ft ²
16	Bath 4 - Window Sill	1.417 ft ²	<7.1 µg/ft ²	250 µg/ft ²
17	Hall 4 - Floor	1.000 ft ²	<10 µg/ft ²	40 µg/ft ²
18	Hall 5 - Floor	1.000 ft ²	<10 µg/ft ²	40 µg/ft ²
19	Room 3 - Floor	1.000 ft ²	<10 µg/ft ²	40 µg/ft ²
20	Room 4 - Floor	1.000 ft ²	<10 µg/ft ²	40 µg/ft ²
21	Room 5 - Floor	1.000 ft ²	<10 µg/ft ²	40 µg/ft ²
22	Room 5 - Window Sill	1.000 ft ²	<10 µg/ft ²	250 µg/ft ²
23	Room 5 - Window Trough	0.896 ft ²	3942 µg/ft ²	400 µg/ft ²
24	Room 6 - Floor	1.000 ft ²	<10 µg/ft ²	40 µg/ft ²
25	Room 6 - Window Sill	1.000 ft ²	<10 µg/ft ²	250 µg/ft ²
26	Room 6 – Window Trough	1.000 ft ²	1890 µg/ft ²	400 µg/ft ²
27	Blank	0	<10 µg/ft ²	-
28	Blank	0	<10 µg/ft ²	-
29	Blank	0	<10 µg/ft ²	-



All samples were collected and delivered to SanAir Technologies Laboratory under chain of custody protocols.

Collection Method ASTM E1644-04

µg/ft micrograms per square foot

Please see attached sample location diagram.

The following clearance criteria have been set for levels of lead in dust for post abatement activities;

- 40 µg/ft² on floors
- 250 µg/ft² on window sills
- 400 µg/ft² on window troughs

This XRF and dust wipe sampling testing and report was performed according to all state guidelines for the testing of lead based paint in buildings by Big East Environmental under lead consultant contractor license number 002099.

Summary

Lead based paint HAS been identified during this inspection. Levels of lead in dust ARE above action levels. Please see site diagrams for room and surface identification.

DISCLOSURE

Big East Environmental, LLC was employed to complete a limited representative testing of toxic levels of lead in painted surfaces using X-Ray Fluorescence (XRF) analysis. Big East Environmental, LLC makes no guarantee that surfaces not tested do not contain toxic levels of lead. The presence or absence of lead-based paint or lead-based paint hazards applies only to the tested or assessed surfaces on the date of the inspection. It should be understood that conditions may change due to deterioration or maintenance. The results and materials conditions noted within this report were accurate at the time of the inspection and in no way reflect the conditions at the property after the date of the inspection. Also, due to variability when applying paint coats with a brush, roller, etc., surfaces may have tested below toxic levels of lead in one area of the component but have toxic levels of lead in other areas of the component not tested.

Sincerely,

A handwritten signature in black ink that reads "Eric Gelhaus".

Eric Gelhaus, Project Manager
Lead Inspector#002252

LEAD SURVEY - Basement






68 Water Street, Unit F
Norwalk, CT 06854
Drafted By: Eric Gelhaus
Drafted Date: 10/25/18
Project #: 18591

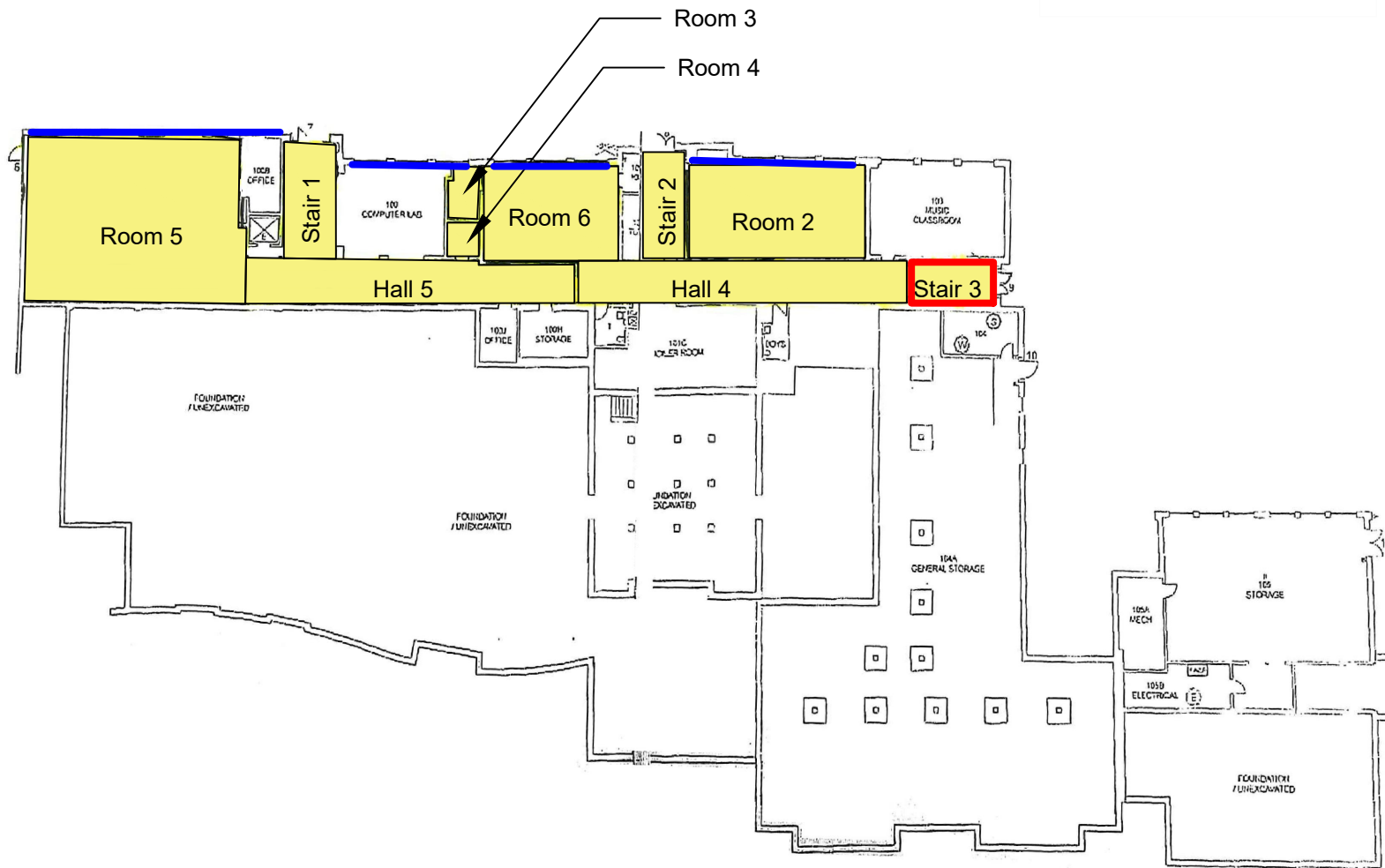
CLIENT:
Fairfield Public Schools
501 Kings Highway East
Fairfield CT

JOB LOCATION:
Stratfield Elementary
1407 Melville Ave
Fairfield CT

LEGEND:

	Lead Dust Positive
	XRF Lead Positive
	Survey Area

EXCLUSIONS:
Inspection was performed in identified areas only. See report for details.



NOT TO SCALE

LEAD BASED PAINT - POSITIVE XRF RESULTS

Room	Component	Side	Substrate	Condition	Color
Staircase 3	Wall	A	Brick	Intact	White
Staircase 3	Wall	B	Brick	Intact	White
Staircase 3	Wall	C	Brick	Intact	White

LEAD BASED PAINT - ELEVATED DUST WIPE RESULTS

ID	LOCATION	SAMPLE AREA	RESULT	HUD Clearance Criteria
23	Room 5 - Window Trough	0.896 ft ²	3942 µg/ft ²	400 µg/ft ²
26	Room 6 – Window Trough	1.000 ft ²	1890 µg/ft ²	400 µg/ft ²

LEAD SURVEY - 1st Floor



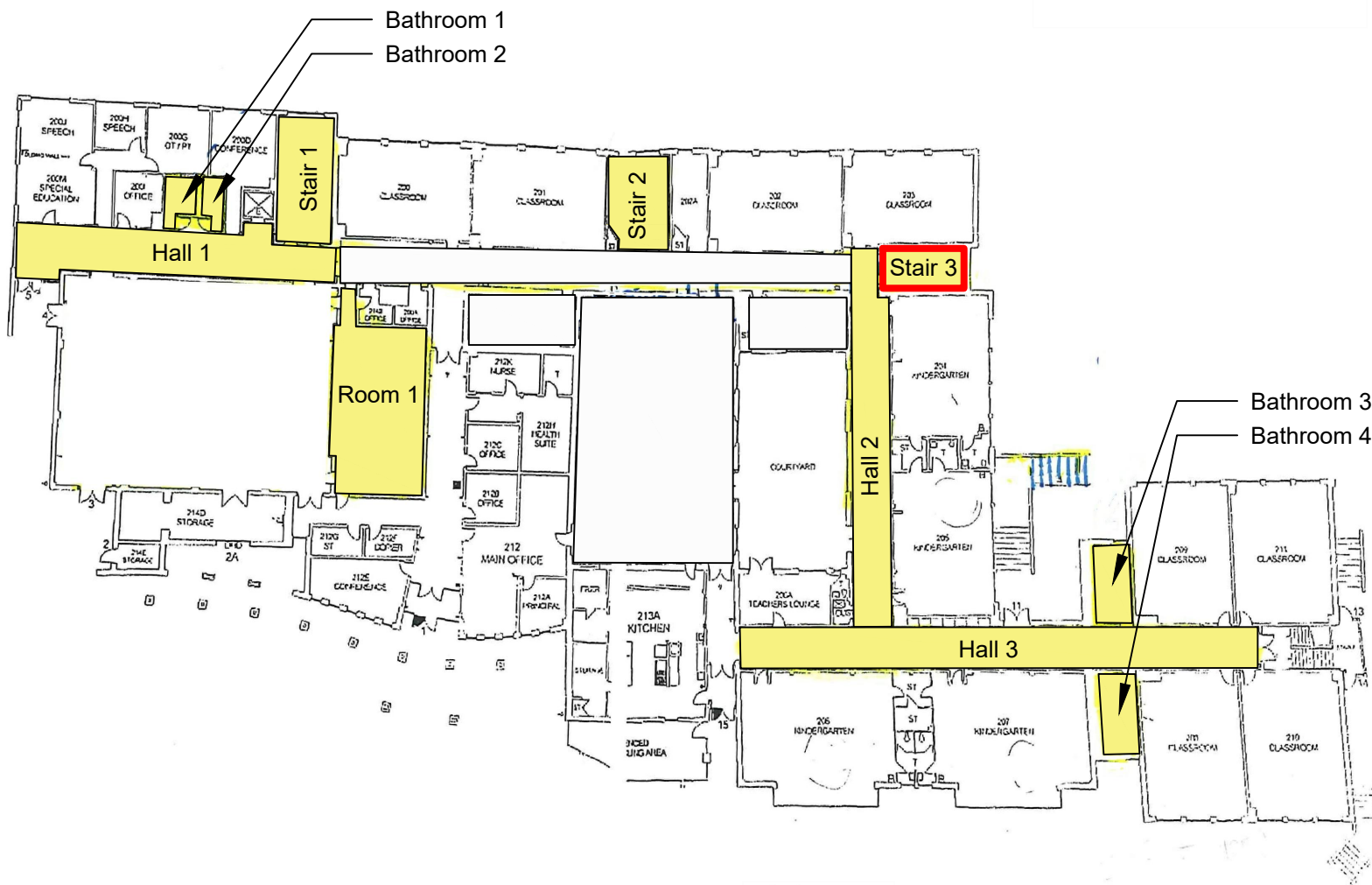
68 Water Street, Unit F
Norwalk, CT 06854
Drafted By: Eric Gelhaus
Drafted Date: 10/25/18
Project #: 18591

CLIENT:
Fairfield Public Schools
501 Kings Highway East
Fairfield CT

JOB LOCATION:
Stratfield Elementary
1407 Melville Ave
Fairfield CT

LEGEND:
■ Lead Dust Positive
■ XRF Lead Positive
■ Survey Area

EXCLUSIONS:
Inspection was performed in identified areas only. See report for details.



NOT TO SCALE

NOTE: BASED PAINT - POSITIVE XRF RESULTS

ROOM	COMPONENT	SIDE	SUBSTRATE	CONDITION	COLOR
Staircase 3	Wall	A	Brick	Intact	White
Staircase 3	Wall	B	Brick	Intact	White
Staircase 3	Wall	C	Brick	Intact	White

LEAD BASED PAINT - ELEVATED DUST WIPE RESULTS

ID	LOCATION	SAMPLE AREA	RESULT	HUD Clearance Criteria
23	Room 5 - Window Trough	0.896 ft ²	3942 µg/ft ²	400 µg/ft ²
26	Room 6 - Window Trough	1.000 ft ²	1890 µg/ft ²	400 µg/ft ²



Lead Based Paint XRF Inspection Data

Big East Environmental
68 Water Street, Unit F
Norwalk CT 06854

INSPECTION DATE:	10/23/2018 - 10/23/2018
REPORT NUMBER:	18591
INSTRUMENT TYPE:	Heuresis Corp. Pb200i XRF Lead Paint Analyzer 1039
ACTION LEVEL:	1.0 mg/cm ²
STATEMENT:	.

Lead Based Paint XRF Inspection Data

Inspection Date: 10/23/2018 - 10/23/2018
 Action Level: 1.0 mg/cm²
 Report Number: 18591
 Total Readings: 117
 Unit Started: 10/23/2018 15:47:43
 Unit Ended: 10/23/2018 17:57:31

Inspection Site: Stratfield Elementary
 1407 Melville Avenue
 Fairfield, CT

Read #	Result	RTA Present	ROOM	SIDE	ASSEMBLY	Member	SUBSTRATE	CONDITION	Floor	Color	Lead (mg/cm ²)	Mode
7	Negative	Off	Hall 1	A	Wall	Wall	Cinderblock	Intact	1st Floor	White	0.2 mg/cm ²	Action Level
8	Negative	Off	Hall 1	B	Wall	Wall	Cinderblock	Intact	1st Floor	White	0.2 mg/cm ²	Action Level
9	Negative	Off	Hall 1	C	Wall	Wall	Cinderblock	Intact	1st Floor	White	0.1 mg/cm ²	Action Level
10	Negative	Off	Hall 1	D	Wall	Wall	Cinderblock	Intact	1st Floor	White	-0.1 mg/cm ²	Action Level
11	Negative	Off	Bathroom 1	A	Wall	Wall	Drywall	Intact	1st Floor	White	0.4 mg/cm ²	Action Level
12	Negative	Off	Bathroom 1	B	Wall	Wall	Drywall	Intact	1st Floor	White	0.2 mg/cm ²	Action Level
13	Negative	Off	Bathroom 1	C	Wall	Wall	Drywall	Intact	1st Floor	White	0.1 mg/cm ²	Action Level
14	Negative	Off	Bathroom 1	D	Wall	Wall	Cinderblock	Intact	1st Floor	White	-0.3 mg/cm ²	Action Level
15	Negative	Off	Bathroom 2	A	Wall	Wall	Cinderblock	Intact	1st Floor	White	0.0 mg/cm ²	Action Level
16	Negative	Off	Bathroom 2	B	Wall	Wall	Cinderblock	Intact	1st Floor	White	0.0 mg/cm ²	Action Level
17	Negative	Off	Bathroom 2	C	Wall	Wall	Drywall	Intact	1st Floor	White	0.2 mg/cm ²	Action Level
18	Negative	Off	Bathroom 2	D	Wall	Wall	Drywall	Intact	1st Floor	White	0.2 mg/cm ²	Action Level
19	Negative	Off	Room 1	A	Wall	Wall	Cinderblock	Intact	1st Floor	White	0.0 mg/cm ²	Action Level
20	Negative	Off	Room 1	B	Wall	Wall	Cinderblock	Intact	1st Floor	White	-0.1 mg/cm ²	Action Level
21	Negative	Off	Room 1	C	Wall	Wall	Cinderblock	Intact	1st Floor	White	0.1 mg/cm ²	Action Level
22	Negative	Off	Room 1	D	Wall	Wall	Cinderblock	Intact	1st Floor	White	-0.1 mg/cm ²	Action Level
23	Negative	Off	Staircase 1	D	Wall	Wall	Brick	Intact	1st Floor	Natural	0.2 mg/cm ²	Action Level
24	Negative	Off	Staircase 1	A	Wall	Wall	Brick	Intact	1st Floor	Natural	0.3 mg/cm ²	Action Level

Lead Based Paint XRF Inspection Data

Inspection Date: 10/23/2018 - 10/23/2018
 Action Level: 1.0 mg/cm²
 Report Number: 18591
 Total Readings: 117
 Unit Started: 10/23/2018 15:47:43
 Unit Ended: 10/23/2018 17:57:31

Inspection Site: Stratfield Elementary
 1407 Melville Avenue
 Fairfield, CT

Read #	Result	RTA Present	ROOM	SIDE	ASSEMBLY	Member	SUBSTRATE	CONDITION	Floor	Color	Lead (mg/cm ²)	Mode
25	Negative	Off	Staircase 1	B	Wall	Wall	Brick	Intact	1st Floor	Natural	0.1 mg/cm ²	Action Level
26	Negative	Off	Staircase 1	C	Wall	Wall	Drywall	Intact	1st Floor	White	0.1 mg/cm ²	Action Level
27	Negative	Off	Staircase 2	A	Wall	Wall	Drywall	Intact	1st Floor	White	0.2 mg/cm ²	Action Level
28	Negative	Off	Staircase 2	B	Wall	Wall	Concrete	Intact	1st Floor	White	0.4 mg/cm ²	Action Level
29	Negative	Off	Staircase 2	C	Wall	Wall	Concrete	Deteriorated	1st Floor	White	0.0 mg/cm ²	Action Level
30	Negative	Off	Staircase 2	D	Wall	Wall	Concrete	Deteriorated	1st Floor	White	0.7 mg/cm ²	Action Level
31	Positive	Off	Staircase 3	A	Wall	Wall	Brick	Intact	1st Floor	White	7.3 mg/cm ²	Action Level
32	Positive	Off	Staircase 3	B	Wall	Wall	Brick	Intact	1st Floor	White	6.6 mg/cm ²	Action Level
33	Positive	Off	Staircase 3	C	Wall	Wall	Brick	Intact	1st Floor	White	4.5 mg/cm ²	Action Level
34	Negative	Off	Hall 2	A	Wall	Wall	Concrete	Intact	1st Floor	White	-0.1 mg/cm ²	Action Level
35	Negative	Off	Hall 2	B	Wall	Wall	Concrete	Deteriorated	1st Floor	White	-0.1 mg/cm ²	Action Level
36	Negative	Off	Hall 2	C	Wall	Wall	Concrete	Deteriorated	1st Floor	White	-0.1 mg/cm ²	Action Level
37	Negative	Off	Hall 2	D	Wall	Wall	Concrete	Intact	1st Floor	White	0.0 mg/cm ²	Action Level
38	Negative	Off	Hall 3	A	Wall	Wall	Concrete	Deteriorated	1st Floor	White	0.1 mg/cm ²	Action Level
39	Negative	Off	Hall 3	B	Wall	Wall	Concrete	Deteriorated	1st Floor	White	-0.1 mg/cm ²	Action Level
40	Negative	Off	Hall 3	C	Wall	Wall	Concrete	Intact	1st Floor	White	0.0 mg/cm ²	Action Level
41	Negative	Off	Hall 3	D	Wall	Wall	Concrete	Intact	1st Floor	White	0.0 mg/cm ²	Action Level
42	Negative	Off	Bathroom 3	A	Wall	Wall	Tile	Intact	1st Floor	White	0.1 mg/cm ²	Action Level

Big East Environmental 68 Water Street, Unit F Norwalk CT 06854

Lead Based Paint XRF Inspection Data

Inspection Date: 10/23/2018 - 10/23/2018
 Action Level: 1.0 mg/cm²
 Report Number: 18591
 Total Readings: 117
 Unit Started: 10/23/2018 15:47:43
 Unit Ended: 10/23/2018 17:57:31

Inspection Site: Stratfield Elementary
 1407 Melville Avenue
 Fairfield, CT

Read #	Result	RTA Present	ROOM	SIDE	ASSEMBLY	Member	SUBSTRATE	CONDITION	Floor	Color	Lead (mg/cm ²)	Mode
43	Negative	Off	Bathroom 3	B	Wall	Wall	Tile	Intact	1st Floor	White	-0.1 mg/cm ²	Action Level
44	Negative	Off	Bathroom 3	C	Wall	Wall	Tile	Intact	1st Floor	White	0.0 mg/cm ²	Action Level
45	Negative	Off	Bathroom 3	D	Wall	Wall	Tile	Intact	1st Floor	White	0.0 mg/cm ²	Action Level
46	Negative	Off	Bathroom 4	A	Wall	Wall	Tile	Intact	1st Floor	White	0.0 mg/cm ²	Action Level
47	Negative	Off	Bathroom 4	B	Wall	Wall	Tile	Intact	1st Floor	White	0.0 mg/cm ²	Action Level
48	Negative	Off	Bathroom 4	C	Wall	Wall	Tile	Intact	1st Floor	White	0.1 mg/cm ²	Action Level
49	Negative	Off	Bathroom 4	D	Wall	Wall	Tile	Intact	1st Floor	White	0.0 mg/cm ²	Action Level
50	Negative	Off	Bathroom 4	C	Window	Sill	Metal	Intact	1st Floor	Black	0.0 mg/cm ²	Action Level
51	Negative	Off	Bathroom 4	C	Window	Casing	Metal	Intact	1st Floor	Black	0.0 mg/cm ²	Action Level
52	Negative	Off	Bathroom 3	A	Window	Casing	Metal	Intact	1st Floor	Black	0.1 mg/cm ²	Action Level
53	Negative	Off	Bathroom 3	A	Window	Sill	Metal	Intact	1st Floor	Black	0.0 mg/cm ²	Action Level
54	Negative	Off	Bathroom 3	C	Door	Jamb	Metal	Intact	1st Floor	Blue	0.1 mg/cm ²	Action Level
55	Negative	Off	Bathroom 3	C	Door	Door	Wood	Intact	1st Floor	Varnish	0.1 mg/cm ²	Action Level
56	Negative	Off	Bathroom 4	A	Door	Door	Wood	Intact	1st Floor	Varnish	0.1 mg/cm ²	Action Level
57	Negative	Off	Bathroom 4	A	Door	Jamb	Metal	Intact	1st Floor	Blue	0.5 mg/cm ²	Action Level
58	Negative	Off	Hall 3	A	Door	Jamb	Metal	Intact	1st Floor	Blue	0.2 mg/cm ²	Action Level
59	Negative	Off	Hall 3	A	Door	Door	Metal	Deteriorated	1st Floor	Blue	0.1 mg/cm ²	Action Level
60	Negative	Off	Hall 2	D	Door	Door	Metal	Intact	1st Floor	Black	0.6 mg/cm ²	Action Level

Lead Based Paint XRF Inspection Data

Inspection Date: 10/23/2018 - 10/23/2018
 Action Level: 1.0 mg/cm²
 Report Number: 18591
 Total Readings: 117
 Unit Started: 10/23/2018 15:47:43
 Unit Ended: 10/23/2018 17:57:31

Inspection Site: Stratfield Elementary
 1407 Melville Avenue
 Fairfield, CT

Read #	Result	RTA Present	ROOM	SIDE	ASSEMBLY	Member	SUBSTRATE	CONDITION	Floor	Color	Lead (mg/cm ²)	Mode
61	Negative	Off	Hall 2	D	Door	Jamb	Metal	Intact	1st Floor	Natural	0.1 mg/cm ²	Action Level
62	Negative	Off	Hall 2	D	Window	Sash	Metal	Intact	1st Floor	Black	0.5 mg/cm ²	Action Level
63	Negative	Off	Hall 2	D	Window	Interior Well-Trough	Metal	Intact	1st Floor	Black	0.3 mg/cm ²	Action Level
64	Negative	Off	Staircase 3	D	Door	Door	Metal	Deteriorated	1st Floor	Blue	0.1 mg/cm ²	Action Level
65	Negative	Off	Staircase 3	D	Door	Jamb	Metal	Intact	1st Floor	Blue	0.3 mg/cm ²	Action Level
66	Negative	Off	Staircase 2	C	Door	Jamb	Metal	Intact	1st Floor	Blue	0.2 mg/cm ²	Action Level
67	Negative	Off	Staircase 2	C	Door	Door	Metal	Deteriorated	1st Floor	Blue	0.1 mg/cm ²	Action Level
68	Negative	Off	Staircase 2	C	Door	Door	Metal	Deteriorated	1st Floor	Blue	0.0 mg/cm ²	Action Level
69	Negative	Off	Staircase 1	C	Door	Door	Metal	Deteriorated	1st Floor	Blue	0.1 mg/cm ²	Action Level
70	Negative	Off	Staircase 1	C	Door	Jamb	Metal	Deteriorated	1st Floor	Blue	0.2 mg/cm ²	Action Level
71	Negative	Off	Room 1	C	Door	Jamb	Metal	Intact	1st Floor	Blue	0.5 mg/cm ²	Action Level
72	Negative	Off	Room 1	C	Door	Door	Wood	Intact	1st Floor	Varnish	0.1 mg/cm ²	Action Level
73	Negative	Off	Bathroom 1	D	Door	Door	Wood	Intact	1st Floor	Varnish	0.2 mg/cm ²	Action Level
74	Negative	Off	Bathroom 2	B	Door	Door	Wood	Intact	1st Floor	Varnish	0.2 mg/cm ²	Action Level
75	Negative	Off	Bathroom 2	B	Door	Jamb	Metal	Intact	1st Floor	Blue	0.2 mg/cm ²	Action Level
76	Negative	Off	Bathroom 1	D	Door	Jamb	Metal	Intact	1st Floor	Blue	0.6 mg/cm ²	Action Level
77	Negative	Off	Hall 1	A	Door	Jamb	Metal	Intact	1st Floor	Blue	0.1 mg/cm ²	Action Level
78	Negative	Off	Hall 1	A	Door	Door	Wood	Deteriorated	1st Floor	Varnish	0.0 mg/cm ²	Action Level

Big East Environmental 68 Water Street, Unit F Norwalk CT 06854

Lead Based Paint XRF Inspection Data

Inspection Date: 10/23/2018 - 10/23/2018
 Action Level: 1.0 mg/cm²
 Report Number: 18591
 Total Readings: 117
 Unit Started: 10/23/2018 15:47:43
 Unit Ended: 10/23/2018 17:57:31

Inspection Site: Stratfield Elementary
 1407 Melville Avenue
 Fairfield, CT

Read #	Result	RTA Present	ROOM	SIDE	ASSEMBLY	Member	SUBSTRATE	CONDITION	Floor	Color	Lead (mg/cm ²)	Mode
79	Negative	Off	Room 5	C	Window	Well-Trough	Metal	Intact	Basement	Black	0.2 mg/cm ²	Action Level
80	Negative	Off	Room 5	C	Window	Sash Interior	Metal	Intact	Basement	Black	0.3 mg/cm ²	Action Level
81	Negative	Off	Room 6	C	Window	Sash Interior	Metal	Intact	Basement	Black	0.4 mg/cm ²	Action Level
82	Negative	Off	Room 6	C	Window	Well-Trough	Metal	Intact	Basement	Black	0.3 mg/cm ²	Action Level
83	Negative	Off	Room 2	C	Window	Well-Trough	Metal	Intact	Basement	Black	0.2 mg/cm ²	Action Level
90	Negative	Off	Room 2	C	Window	Sash Interior	Metal	Intact	Basement	Black	0.4 mg/cm ²	Action Level
91	Negative	Off	Room 2	A	Wall		Brick	Intact	Basement	White	0.3 mg/cm ²	Action Level
92	Negative	Off	Room 2	B	Wall		Brick	Intact	Basement	White	0.2 mg/cm ²	Action Level
93	Negative	Off	Room 2	C	Wall		Brick	Intact	Basement	White	0.1 mg/cm ²	Action Level
94	Negative	Off	Room 2	D	Wall		Drywall	Intact	Basement	White	0.2 mg/cm ²	Action Level
95	Negative	Off	Room 3	C	Wall		Brick	Intact	Basement	White	0.6 mg/cm ²	Action Level
96	Negative	Off	Room 3	D	Wall		Brick	Intact	Basement	White	0.3 mg/cm ²	Action Level
97	Negative	Off	Room 3	A	Wall		Cinderblock	Intact	Basement	White	-0.1 mg/cm ²	Action Level
98	Negative	Off	Room 3	B	Wall		Cinderblock	Intact	Basement	White	-0.2 mg/cm ²	Action Level
99	Negative	Off	Room 4	D	Wall		Brick	Intact	Basement	White	-0.1 mg/cm ²	Action Level
100	Negative	Off	Room 4	C	Wall		Brick	Intact	Basement	White	-0.1 mg/cm ²	Action Level
101	Negative	Off	Room 4	A	Wall		Cinderblock	Intact	Basement	White	0.0 mg/cm ²	Action Level
102	Negative	Off	Room 4	B	Wall		Cinderblock	Intact	Basement	White	0.4 mg/cm ²	Action Level

Big East Environmental 68 Water Street, Unit F Norwalk CT 06854

Lead Based Paint XRF Inspection Data

Inspection Date: 10/23/2018 - 10/23/2018
 Action Level: 1.0 mg/cm²
 Report Number: 18591
 Total Readings: 117
 Unit Started: 10/23/2018 15:47:43
 Unit Ended: 10/23/2018 17:57:31

Inspection Site: Stratfield Elementary
 1407 Melville Avenue
 Fairfield, CT

Read #	Result	RTA Present	ROOM	SIDE	ASSEMBLY	Member	SUBSTRATE	CONDITION	Floor	Color	Lead (mg/cm ²)	Mode
103	Negative	Off	Room 5	D	Wall		Brick	Intact	Basement	Natural	0.3 mg/cm ²	Action Level
104	Negative	Off	Room 5	C	Wall		Brick	Intact	Basement	Natural	0.1 mg/cm ²	Action Level
105	Negative	Off	Room 5	B	Wall		Brick	Intact	Basement	Natural	0.1 mg/cm ²	Action Level
106	Negative	Off	Room 5	A	Wall		Cinderblock	Intact	Basement	White	-0.2 mg/cm ²	Action Level
107	Negative	Off	Room 6	C	Wall		Brick	Intact	Basement	White	0.2 mg/cm ²	Action Level
108	Negative	Off	Room 6	D	Wall		Brick	Intact	Basement	White	0.2 mg/cm ²	Action Level
109	Negative	Off	Room 6	B	Wall		Brick	Intact	Basement	White	0.0 mg/cm ²	Action Level
110	Negative	Off	Room 6	A	Wall		Brick	Intact	Basement	White	0.3 mg/cm ²	Action Level
111	Negative	Off	Hall 4	A	Wall		Brick	Intact	Basement	White	0.5 mg/cm ²	Action Level
112	Negative	Off	Hall 4	B	Wall		Brick	Intact	Basement	White	0.1 mg/cm ²	Action Level
113	Negative	Off	Hall 4	C	Wall		Brick	Intact	Basement	White	0.5 mg/cm ²	Action Level
114	Negative	Off	Hall 4	D	Wall		Brick	Intact	Basement	White	0.4 mg/cm ²	Action Level
115	Negative	Off	Hall 5	D	Wall		Brick	Intact	Basement	White	0.3 mg/cm ²	Action Level
116	Negative	Off	Hall 5	C	Wall		Brick	Intact	Basement	White	0.4 mg/cm ²	Action Level
117	Negative	Off	Hall 5	A	Wall		Cinderblock	Intact	Basement	White	-0.1 mg/cm ²	Action Level
118	Negative	Off	Hall 5	B	Wall		Brick	Intact	Basement	White	0.4 mg/cm ²	Action Level
119	Negative	Off	Hall 5	D	Door	Jamb	Metal	Intact	Basement	Blue	0.5 mg/cm ²	Action Level
120	Negative	Off	Hall 5	D	Door	Door	Wood	Intact	Basement	Varnish	0.1 mg/cm ²	Action Level

Big East Environmental 68 Water Street, Unit F Norwalk CT 06854

Lead Based Paint XRF Inspection Data

Inspection Date: 10/23/2018 - 10/23/2018
 Action Level: 1.0 mg/cm²
 Report Number: 18591
 Total Readings: 117
 Unit Started: 10/23/2018 15:47:43
 Unit Ended: 10/23/2018 17:57:31

Inspection Site: Stratfield Elementary
 1407 Melville Avenue
 Fairfield, CT

Read #	Result	RTA Present	ROOM	SIDE	ASSEMBLY	Member	SUBSTRATE	CONDITION	Floor	Color	Lead (mg/cm ²)	Mode
121	Negative	Off	Hall 4	D	Door	Door	Wood	Intact	Basement	Varnish	0.1 mg/cm ²	Action Level
122	Negative	Off	Hall 4	D	Door	Jamb	Metal	Intact	Basement	Blue	0.5 mg/cm ²	Action Level
123	Negative	Off	Room 6	C	Door	Jamb	Metal	Intact	Basement	Blue	0.2 mg/cm ²	Action Level
124	Negative	Off	Room 4	A	Door	Jamb	Metal	Intact	Basement	Blue	0.2 mg/cm ²	Action Level
125	Negative	Off	Room 3	D	Door	Jamb	Metal	Intact	Basement	Blue	0.1 mg/cm ²	Action Level
126	Negative	Off	Room 2	A	Door	Jamb	Metal	Intact	Basement	Blue	0.2 mg/cm ²	Action Level
127	Negative	Off	Room 2	A	Door	Door	Wood	Intact	Basement	Varnish	0.1 mg/cm ²	Action Level
128	Negative	Off	Room 3	D	Door	Door	Wood	Intact	Basement	Varnish	0.1 mg/cm ²	Action Level
129	Negative	Off	Room 4	A	Door	Door	Wood	Intact	Basement	Varnish	0.2 mg/cm ²	Action Level

----- END OF READINGS -----



SanAir ID Number
18049233
FINAL REPORT
10/26/2018 11:55:12 AM

Name: Big East Environmental
Address: 68 Water St
Unit F
Norwalk, CT 06854
Phone: 203-354-4955

Project Number: 18591
P.O. Number:
Project Name: Stratfield Elementary
Collected Date: 10/23/2018
Received Date: 10/25/2018 10:10:00 AM

Analyst: Kasali, Abisola

Test Method: SW846/M3050B/7000B

Lead Wipe Analysis

Sample	Description	µg Pb		Units	Calculated	Sample	Units
		In Sample	Area		RL	Results	
18049233 - 1	01 / Hall 1 (Window Trough)	82	1.302	Sq. Ft.	7.7	62.9	µg/ft2
18049233 - 2	02 / Hall 1 (Window Sill)	< 10	2.344	Sq. Ft.	4.3	<4.3	µg/ft2
18049233 - 3	03 / Hall 1 (Floor)	< 10	1	Sq. Ft.	10	<10	µg/ft2
18049233 - 4	04 / Bath 1 (Floor)	< 10	1	Sq. Ft.	10	<10	µg/ft2
18049233 - 5	05 / Bath 2 (Floor)	< 10	1	Sq. Ft.	10	<10	µg/ft2
18049233 - 6	06 / Stair 1 (Floor)	< 10	1	Sq. Ft.	10	<10	µg/ft2
18049233 - 7	07 / Stair 2 (Floor)	< 10	1	Sq. Ft.	10	<10	µg/ft2
18049233 - 8	08 / Hall 2 (Floor)	< 10	1	Sq. Ft.	10	<10	µg/ft2
18049233 - 9	09 / Room 1 (Floor)	< 10	1	Sq. Ft.	10	<10	µg/ft2
18049233 - 10	10 / Hall 3 (Floor)	< 10	1	Sq. Ft.	10	<10	µg/ft2
18049233 - 11	11 / Hall 2 (Window Sill)	< 10	1	Sq. Ft.	10	<10	µg/ft2
18049233 - 12	12 / Hall 2 (Window Trough)	125	0.563	Sq. Ft.	17.8	221.7	µg/ft2
18049233 - 13	13 / Bath 3 (Floor)	< 10	1	Sq. Ft.	10	<10	µg/ft2
18049233 - 14	14 / Bath 3 (Sill)	< 10	1.417	Sq. Ft.	7.1	<7.1	µg/ft2
18049233 - 15	15 / Bath 4 (Floor)	< 10	1	Sq. Ft.	10	<10	µg/ft2
18049233 - 16	16 / Bath 4 (Sill)	< 10	1.417	Sq. Ft.	7.1	<7.1	µg/ft2
18049233 - 17	17 / Hall 4 (Floor)	< 10	1	Sq. Ft.	10	<10	µg/ft2
18049233 - 18	18 / Hall 5 (Floor)	< 10	1	Sq. Ft.	10	<10	µg/ft2
18049233 - 19	19 / Room 3 (Floor)	< 10	1	Sq. Ft.	10	<10	µg/ft2
18049233 - 20	20 / Room 4 (Floor)	< 10	1	Sq. Ft.	10	<10	µg/ft2
18049233 - 21	21 / Room 5 (Floor)	< 10	1	Sq. Ft.	10	<10	µg/ft2
18049233 - 22	22 / Room 5 (Window Sill)	< 10	1	Sq. Ft.	10	<10	µg/ft2
18049233 - 23	23 / Room 5 (Window Trough)	3532	0.896	Sq. Ft.	11.2	3942	µg/ft2
18049233 - 24	24 / Room 6 (Floor)	< 10	1	Sq. Ft.	10	<10	µg/ft2
18049233 - 25	25 / Room 6 (Window Sill)	< 10	1	Sq. Ft.	10	<10	µg/ft2
18049233 - 26	26 / Room 6 (Window Trough)	1890	1	Sq. Ft.	10	1890	µg/ft2

Method Reporting Limit < 10 µg/wipe

Signature: 

Date: 10/25/2018

Reviewed: 

Date: 10/25/2018



SanAir ID Number
18049233
FINAL REPORT
10/26/2018 11:55:12 AM

Name: Big East Environmental
Address: 68 Water St
Unit F
Norwalk, CT 06854
Phone: 203-354-4955

Project Number: 18591
P.O. Number:
Project Name: Stratfield Elementary
Collected Date: 10/23/2018
Received Date: 10/25/2018 10:10:00 AM

Analyst: Kasali, Abisola

Test Method: SW846/M3050B/7000B

Lead Wipe Analysis

Sample	Description	$\mu\text{g Pb}$		Units	Calculated	Sample
		In Sample	Area		RL	Results
18049233 - 27	27 / Blank 1	< 10	0	Sq. Ft.		
18049233 - 28	28 / Blank 2	< 10	0	Sq. Ft.		
18049233 - 29	29 / Blank 3	< 10	0	Sq. Ft.		

Method Reporting Limit < 10 $\mu\text{g/wipe}$

Signature: 

Date: 10/25/2018

Reviewed: 

Date: 10/25/2018



Technologies Laboratory
1551 Oakbridge Drive, Suite B - Powhatan, VA 23139
804-897-1177 / 888-895-1177 / Fax 804-897-0070
www.sanair.com

Metals & Lead Chain of Custody

SanAir ID Number

18049233

Company: Big East Environmental	Project #: 18541	Phone #: 203-354-4955
Address: 68 Water Street	Project Name: Stratfield Elementary	Phone #: 203-505-9717
City, St., Zip: Norwalk, CT 06854	Date Collected: 10/23/18	Fax #: 203-956-5878
Samples Collected By: Eric Gelhaus	P.O. Number:	Email:

Matrix Types

Metals Analysis Types

<input type="checkbox"/> Air	<input type="checkbox"/> Aqueous	<input type="checkbox"/> Bulk	<input checked="" type="checkbox"/> Total Concentration of Lead	<input type="checkbox"/> ICP-total concentration of metals (please list metals): <input type="checkbox"/> Other:
<input type="checkbox"/> Paint	<input type="checkbox"/> Sludge	<input type="checkbox"/> Soil	<input type="checkbox"/> Total Concentration of RCRA 8 Metals	
<input type="checkbox"/> Dust	<input checked="" type="checkbox"/> Wipe	<input type="checkbox"/> Potable Water	<input type="checkbox"/> TCLP for Lead	
<input type="checkbox"/> Non-Potable Water	<input type="checkbox"/> Wastewater	<input type="checkbox"/> TCLP for RCRA 8 Metals		
<input type="checkbox"/> Other:			<input type="checkbox"/> TCLP Full (w/ Organics)	

*Turn Around Times	Same Day <input type="checkbox"/>	<input checked="" type="checkbox"/> 1 Day	2 days <input type="checkbox"/>	3 Days <input type="checkbox"/>
	<input type="checkbox"/> Standard (5 day)	<input type="checkbox"/> Full TCLP (10d)		

*Courier charge for same day and 1 day TAT for offsite work.

Sample #	Sample Identification/Location	Flow Rate	Start Time	Stop Time	Volume (L) or Area (Sq ft)
01	Hall 1 (window trough)				3.75" x 50"
02	Hall 1 (window sill)				6.75" x 50"
03	Hall 1 (window floor)				12 x 12
04	Bath 1 (floor)				12 x 12
05	Bath 2 (floor)				12 x 12
06	Stair 1 (window trough) Stair 1 (floor)				12 x 12
07	Stair 1 (window sill) Stair 2 (floor)				12 x 12
08	Stair 1 (floor) Hall 2 (floor)				12 x 12
09	Room 1 (floor)				12 x 12
10	Stair 2 (window trough) Hall 3 (floor)				12 x 12
11	Stair 2 (window sill) Hall 2 (window sill)				12 x 12
12	Stair 2 (floor) Hall 2 (window trough)				2" x 40.5"

Special Instructions

Relinquished by: <i>[Signature]</i>	Date: 10/24/18	Time: 4pm	Received by: <i>[Signature]</i>	Date: OCT 25 2018	Time: 10:10A
-------------------------------------	-----------------------	------------------	---------------------------------	--------------------------	---------------------

Unless scheduled, the turn around time for all samples received after 3 pm will begin at 8 am the next business morning.
Weekend or Holiday work must be scheduled ahead of time and is charged for rush turn around time.
Work with standard turn around time sent Priority Overnight and Billed To Recipient will be charged a \$10 shipping fee.

Page 1 of 3

SanAir

Technologies Laboratory

1551 Oakbridge Drive, Suite B - Powhatan, VA 23139

804-897-1177 / 888-895-1177 / Fax 804-897-0070

www.sanair.com

**Metals & Lead
Chain of Custody**

SanAir ID Number

18049233

Company: Big East Environmental	Project #: 18591	Phone #: 203-354-4955
Address: 68 Water Street	Project Name: Stratfield Elementary	Phone #: 203-505-9717
City, St., Zip: Norwalk, CT 06854	Date Collected: 10/18/18 10/23/18	Fax #: 203-956-5878
Samples Collected By: Eric Gelhaus	P.O. Number:	Email:

Matrix Types**Metals Analysis Types**

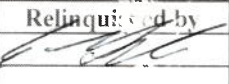

<input type="checkbox"/> Air	<input type="checkbox"/> Aqueous	<input type="checkbox"/> Bulk	<input checked="" type="checkbox"/> Total Concentration of Lead	<input type="checkbox"/> ICP-total concentration of metals (please list metals):
<input type="checkbox"/> Paint	<input type="checkbox"/> Sludge	<input type="checkbox"/> Soil	<input type="checkbox"/> Total Concentration of RCRA 8 Metals	
<input type="checkbox"/> Dust	<input checked="" type="checkbox"/> Wipe	<input type="checkbox"/> Potable Water	<input type="checkbox"/> TCLP for Lead	
<input type="checkbox"/> Non-Potable Water	<input type="checkbox"/> Wastewater	<input type="checkbox"/> TCLP for RCRA 8 Metals	<input type="checkbox"/> Other:	
<input type="checkbox"/> Other:		<input type="checkbox"/> TCLP Full (w/ Organics)		

*Turn Around Times	Same Day <input type="checkbox"/>	<input checked="" type="checkbox"/> 1 Day	2 days <input type="checkbox"/>	3 Days <input type="checkbox"/>
	<input type="checkbox"/> Standard (5 day)	<input type="checkbox"/> Full TCLP (10d)		

*Courier charge for same day and 1 day TAT for offsite work.

Sample #	Sample Identification/Location	Flow Rate	Start Time	Stop Time	Volume (L) or Area (Sq ft)
13	Bath 3 (floor)				12" x 12"
14	Bath 3 (sill)				6" x 34"
15	Bath 4 (floor)				12" x 12"
16	Bath 4 (sill)				6" x 34"
17	Hall 4 (floor)				12" x 12"
18	Hall 5 (floor)				12" x 12"
19	Room 3 (floor)				12" x 12"
20	Room 4 (floor)				12" x 12"
21	Room 5 (floor)				12" x 12"
22	Room 5 (window sill)				12" x 12"
23	Room 5 (window trough)				3" x 43"
24	Room 6 (floor)				12" x 12"

Special Instructions

Relinquished by: 	Date: 10/24/18	Time:	Received by: 	Date: OCT 25 2018	Time: 10:04
---	-----------------------	-------	--	--------------------------	--------------------

Unless scheduled, the turn around time for all samples received after 3 pm will begin at 8 am the next business morning.

Weekend or holiday work must be scheduled ahead of time and is charged for rush turn around time.

Work with standard turn around time sent Priority Overnight and Billed To Recipient will be charged a \$10 shipping fee.

Page 2 of 3

SanAir

Technologies Laboratory

1551 Oakbridge Drive, Suite B - Powhatan, VA 23139

804-897-1177 / 888-895-1177 / Fax 804-897-0070

www.sanair.com

Metals & Lead Chain of Custody

SanAir ID Number

8049233

Company Big East Environmental	Project # 18591	Phone # 203-354-4955
Address 68 Water Street	Project Name Stafford Elementary	Phone # 203-505-9717
City, St., Zip Norwalk, CT 06854	Date Collected 10/23/18	Fax # 203-956-5878
Samples Collected By Eric Gelhaus	P.O. Number	Email

Matrix Types

Metals Analysis Types

<input type="checkbox"/> Air	<input type="checkbox"/> Aqueous	<input type="checkbox"/> Bulk	<input checked="" type="checkbox"/> Total Concentration of Lead	<input type="checkbox"/> ICP-total concentration of metals (please list metals): <input type="checkbox"/> Other:
<input type="checkbox"/> Paint	<input type="checkbox"/> Sludge	<input type="checkbox"/> Soil	<input type="checkbox"/> Total Concentration of RCRA 8 Metals	
<input type="checkbox"/> Dust	<input checked="" type="checkbox"/> Wipe	<input type="checkbox"/> Potable Water	<input type="checkbox"/> ICLP for Lead	
<input type="checkbox"/> Non-Potable Water	<input type="checkbox"/> Wastewater	<input type="checkbox"/> TCLP for RCRA 8 Metals		
<input type="checkbox"/> Other:		<input type="checkbox"/> TCLP Full (w/ Organics)		

*Turn Around Times	Same Day <input type="checkbox"/>	<input checked="" type="checkbox"/> 1 Day	2 days <input type="checkbox"/>	3 Days <input type="checkbox"/>
	<input type="checkbox"/> Standard (5 day)	<input type="checkbox"/> Full ICLP (10d)		

*Courier charge for same day and 1 day TAT for offsite work.

Sample #	Sample Identification/Location	Flow Rate	Start Time	Stop Time	Volume (L) or Area (Sq ft)
25	Room 6 (window sill)				12" x 12"
26	Room 6 (window trough)				3" x 48"
27	Blank 1				N/A
28	Blank 2				N/A
29	Blank 3				N/A

Special Instructions	
----------------------	--

Relinquished by	Date	Time	Received by	Date	Time
<i>[Signature]</i>	10/24/18	4pm	<i>[Signature]</i>	OCT 25 2018	10:10A

Unless scheduled, the turn around time for all samples received after 3 pm will begin at 8 am the next business morning.
 Weekend or Holiday work must be scheduled ahead of time and is charged for rush turn around time.
 Work with standard turn around time sent Priority Overnight and Billed To Recipient will be charged a \$10 shipping fee.

Page 3 of 3