

Upcoming Meeting Dates

MM Presentation to BOF, 4/3/2018

April 24, 2018 BOE Agenda for Self-Evaluation

FPS Enrollment

- March 1, 2018
- April 1, 2018



### Upcoming Board of Education Meeting Dates

<b>April 24</b>	<b>5:00 PM</b>	Policy Committee Meeting 501 Kings Hwy East Superintendent's Conference Room
<b>April 24</b>	<b>7:00 PM</b>	Special Meeting 501 Kings Hwy East Superintendent's Conference Room
<b>May 1</b>	<b>9:00 AM</b>	Finance Committee Meeting 501 Kings Hwy East Superintendent's Conference Room
<b>May 8</b>	<b>7:30 PM</b>	Regular Meeting 501 Kings Hwy East 2 <sup>nd</sup> Floor Board Conference Room

#### *Other Town Meetings of Note:*

*April 16 – RTM Committee: Non-Recurring Capital Projects (Security) for FWHS, FLHS*  
*April 18 – BOS: Non-Recurring Capital Projects (Security) for FWHS, FLHS*  
*April 23 – RTM: Non-Recurring Capital Projects (Security) for FWHS, FLHS*  
*May 7 – RTM Budget Vote*



# Fairfield Public Schools

## Facility Planning Update

April 3, 2018



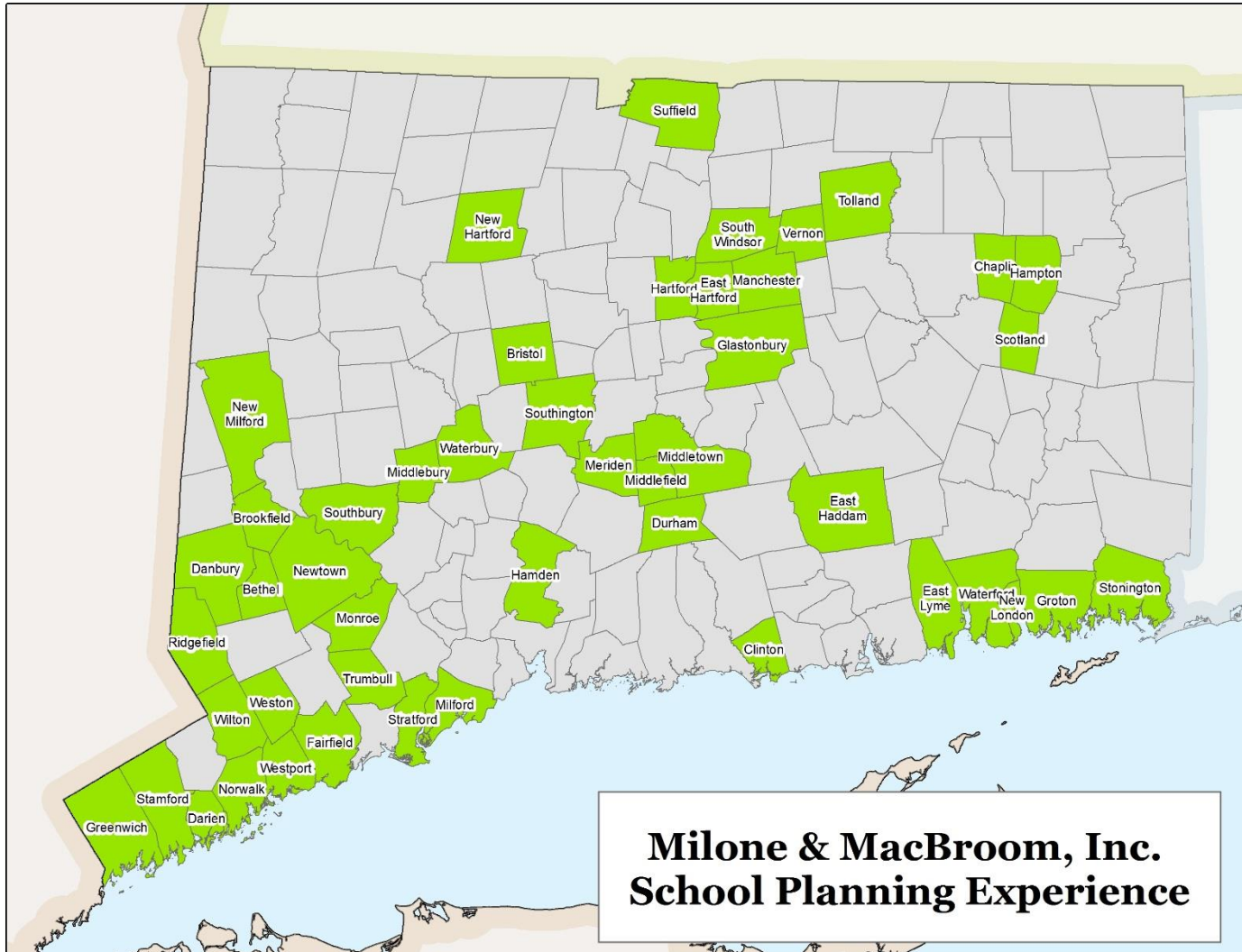
# MMI School Planning Experience

Our experience developing enrollment studies in the following areas:

- Comprehensive Enrollment Projections
- Facility Utilization Studies
- Long Range Plans
- Redistricting & Reconfiguration Plans



# MMI School Planning Experience





# Summary of Previous Efforts



# Timeline

## 2016 Scenario Planning

- District amended its state-mandated Racial Balance Plan in 2016
- Tested several comprehensive redistricting scenarios for long-term viability
  - Tested scenarios with and without school construction projects at Holland Hill and Mill Hill

## 2017-18 Scenario Planning

- Created additional scenarios that were not investigated as part of the 2016 Scenario Planning
- Assessed potential cost-savings measures in light of state budget including school closures, school paring, pocket redistricting, and grade reconfiguration options



# Guiding Principles

## Guiding Principles (1) -

- Strive to maintain established neighborhoods and consider natural and manmade boundaries (rivers, highways)
- Consider the impact on busing and walkers
- Safety issues should be considered
- Phase out all temporary solutions (portables)
- Strive for sustained facility utilization at 90%
- Siblings should attend same schools – avoid crossing feeder patterns
- Maintain District Guidelines for class size
- Create the least amount of disruption

(1) *Adhoc Redistricting Committee* - Redistricting: Guiding Principles  
(Approved by BOE, November 17, 2015)





# Racial Balance

## Connecticut's Racial Balance Law

- Outlined in Connecticut General Statutes § 10-226
- Schools whose minority composition varies by 25% or more from the district's minority composition for the same grades are considered racially imbalanced
  - Districts with racial imbalances need to submit a plan to the CSDE addressing how imbalance will be corrected – Fairfield last amended their plan in 2016
  - McKinley has been designated as racially imbalanced for 7 out of the last 8 school years



# 2016 Scenario Planning

## Long-Term Solutions

- Comprehensive redistricting identified as a long-term solution to address overcrowding and alleviate racial imbalance while adhering to District's guiding principles
  - Requires construction of two 504-student schools at Holland Hill and Mill Hill
  - Alleviates racial imbalance at McKinley to less than 20% of the district average
  - Allows the district to address overcrowding and remove portable classrooms at all schools
  - Would require comprehensive redistricting of between 15% and 20% of elementary school students



# Conceptual Redistricting Options

## No New Construction at Holland Hill or Mill Hill

- Does not get McKinley within 20% of district average for racial balance
- Does not address overcrowding or remove portables
- **Not a viable solution to overcrowding and racial balance**

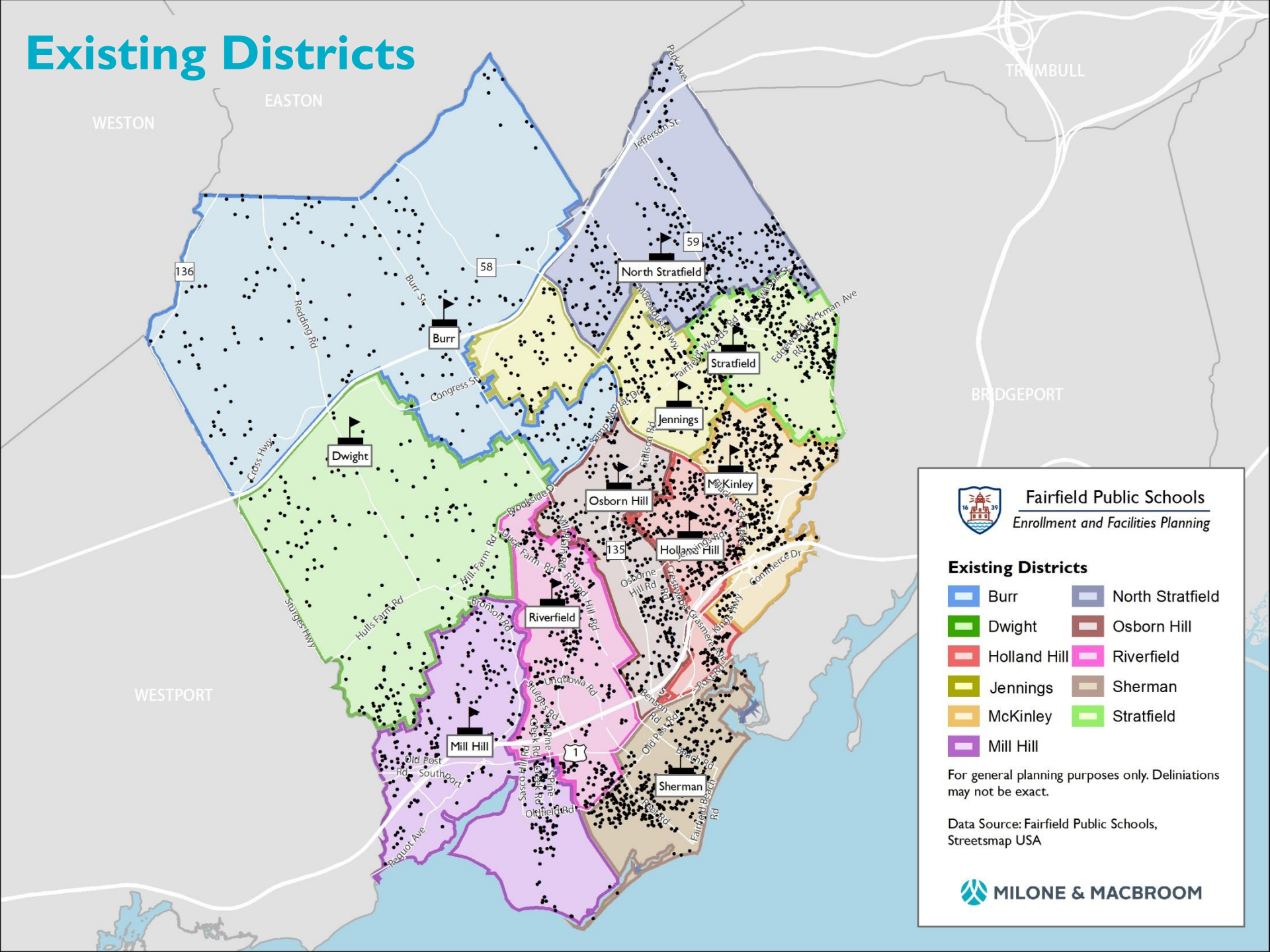
## New Construction only at Holland Hill (504)

- Does not get McKinley within 20% of district average for racial balance
- Does not address overcrowding at Sherman or Mill Hill
- Portables can be removed at Holland Hill but remain at Mill Hill
- **Not a viable solution to overcrowding and racial balance**

## New Construction at both Holland Hill (504) and Mill Hill (504)

- Gets McKinley under 20% of district average for racial balance
- Addresses overcrowding at Sherman and allows district to remove all portable classrooms
- **Two redistricting scenarios identified as being viable solutions to overcrowding and racial balance**

# Existing Districts



**Fairfield Public Schools**  
Enrollment and Facilities Planning

## Existing Districts

	Burr		North Stratfield
	Dwight		Osborn Hill
	Holland Hill		Riverfield
	Jennings		Sherman
	McKinley		Stratfield
	Mill Hill		

For general planning purposes only. Delineations may not be exact.

Data Source: Fairfield Public Schools, Streetsmap USA

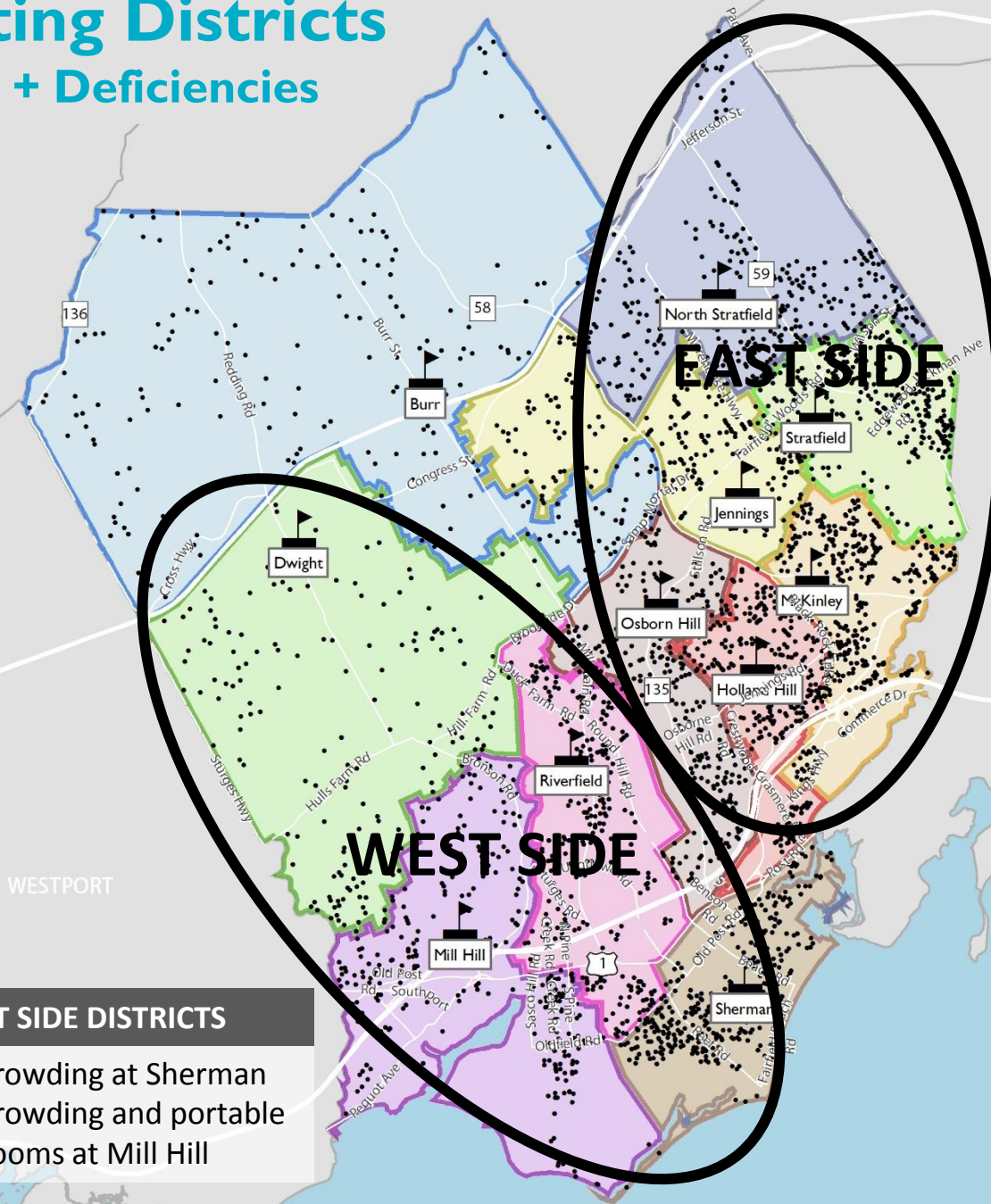


**MILONE & MACBROOM**



# Existing Districts

## Needs + Deficiencies



### EAST SIDE DISTRICTS

- **Racial imbalance** at McKinley
- Possible **impending racial imbalance** at Holland Hill
- Overcrowding and portables at existing Holland Hill



Fairfield Public Schools  
Enrollment and Facilities Planning

### Existing Districts

	Burr		North Stratfield
	Dwight		Osborn Hill
	Holland Hill		Riverfield
	Jennings		Sherman
	McKinley		Stratfield
	Mill Hill		

For general planning purposes only. Delineations may not be exact.

Data Source: Fairfield Public Schools, Streetsmap USA

### WEST SIDE DISTRICTS

- Overcrowding at Sherman
- Overcrowding and portable classrooms at Mill Hill

# Viable Scenario (from 2016)

## HOLLAND HILL (504 STUDENTS)

- Infusion of space from the Holland Hill construction project enables the redistricting of east-side districts to address racial imbalance at McKinley.
- Holland Hill construction project alone not enough to reduce McKinley racial imbalance to under 20% of district average

BRIDGEPORT



**Fairfield Public Schools**  
Enrollment and Facilities Planning

### Scenario F (2016)

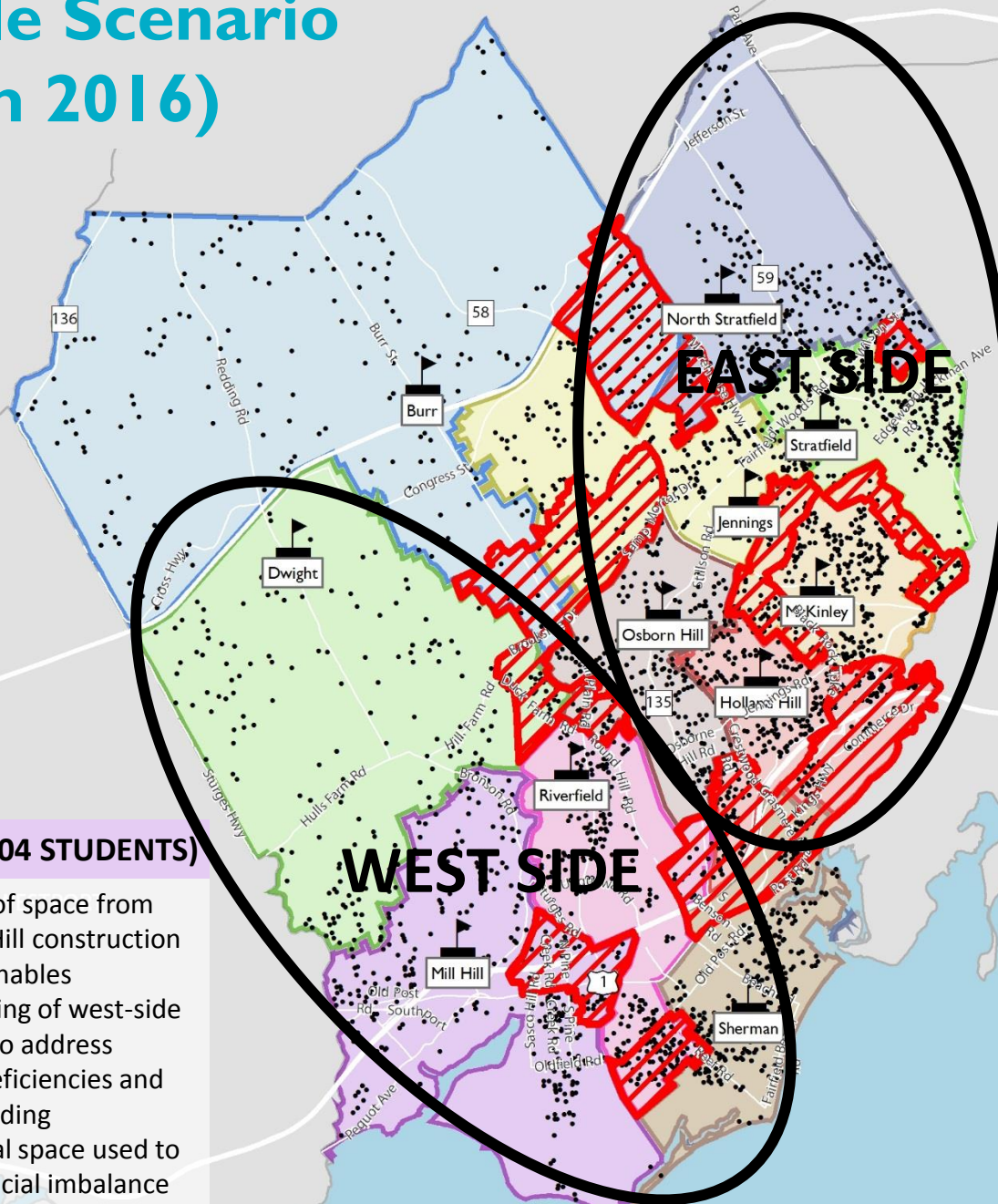
	Burr		North Stratfield
	Dwight		Osborn Hill
	Holland Hill		Riverfield
	Jennings		Sherman
	McKinley		Stratfield
	Mill Hill		Area of Change

For general planning purposes only. Delineations may not be exact.

Data Source: Fairfield Public Schools, Streetsmap USA

## MILL HILL (504 STUDENTS)

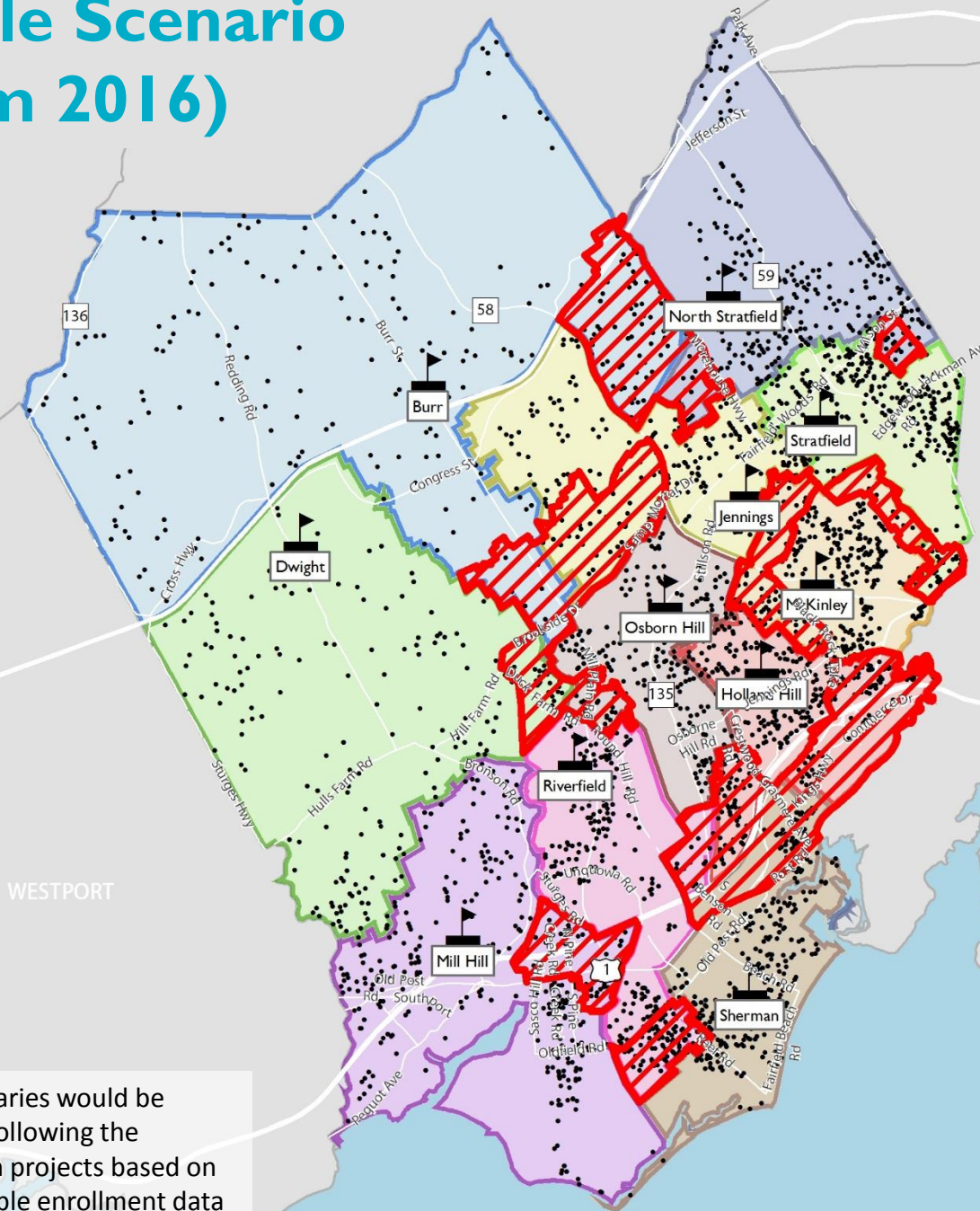
- Infusion of space from the Mill Hill construction project enables redistricting of west-side districts to address facility deficiencies and overcrowding
- Additional space used to reduce racial imbalance at McKinley





# Viable Scenario (from 2016)

~20% of elementary  
school students  
would be redistricted  
under this scenario



Final boundaries would be developed following the construction projects based on latest available enrollment data



Fairfield Public Schools  
Enrollment and Facilities Planning

## Scenario F (2016)

Burr	North Stratfield
Dwight	Osborn Hill
Holland Hill	Riverfield
Jennings	Sherman
McKinley	Stratfield
Mill Hill	Area of Change

For general planning purposes only. Delineations may not be exact.

Data Source: Fairfield Public Schools,  
Streetsmap USA



MILONE & MACBROOM



# 2017 Scenario Planning

Tested additional scenarios that were not examined in the 2016 conceptual redistricting options – focus was on testing structural changes

- Assessed potential cost-savings measures in light of state budget including school closures, school paring, pocket redistricting, and grade reconfiguration options
- School-pairing of McKinley with Jennings (K-2, 3-5) was identified as a sustainable long-term solution to racial imbalance
  - Deviates from current K-5 neighborhood based educational model
  - Requires further architectural study
- Three other options were determined to be feasible at achieving cost savings or addressing school overcrowding, but **did not address racial imbalance at McKinley**



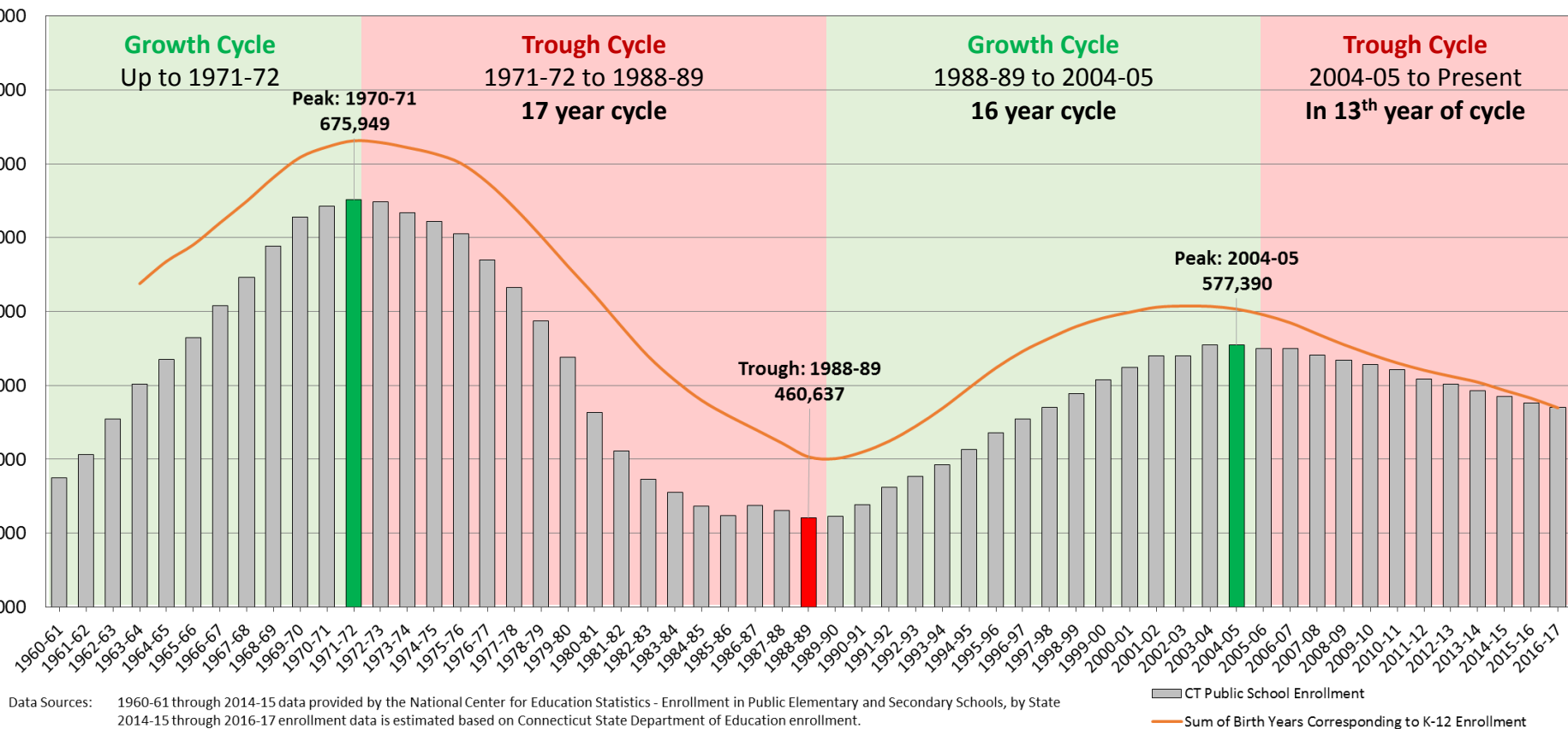


# Enrollment Trends and Projections



# State Enrollment Trends

Public School Enrollment in Connecticut: 1960 to 2016



**“Baby Boom”** enters school – enrollments surge in the 1960s

**“Baby Bust”** of the late 1960s and 1970s enters school and leads to enrollment declines

**“Echo Boom”** (millennials) begin entering school, leading to another growth cycle

**“Echo Bust”** in 13<sup>th</sup> year of cycle – are we nearing the end of a cycle?



# Projections Comparison

## Elementary School Projections Comparison

Grade	K	1	2	3	4	5	K-5 Total
Actual Enrollment	631	674	697	719	771	743	4,235
Projected Enrollment	637	668	681	715	778	741	4,220
Difference	(6)	6	16	4	(7)	2	15

0.3% deviation

Enrollment data provided by Fairfield Public Schools as of October 1, 2017

## Middle School Projections Comparison

Grade	6	7	8	6-8 Total
Actual Enrollment	893	778	787	2,458
Projected Enrollment	890	781	772	2,443
Difference	3	(3)	15	15

0.6% deviation

Enrollment data provided by Fairfield Public Schools as of October 1, 2017

## High School Projections Comparison

Grade	9	10	11	12	9-12 Total
Actual Enrollment	762	721	775	803	3,061
Projected Enrollment	746	720	777	783	3,026
Difference	16	1	(2)	20	35

1.2% deviation

Enrollment data provided by Fairfield Public Schools as of October 1, 2017



# Projections Buildings Blocks

## Starting Data

Critical to the overall accuracy of the projections, as each year builds upon the last

### *District Projections*

**Town of  
Fairfield  
Births**

*Obtained from CT  
DPH*

**Historic  
Enrollment  
Trends**

*Obtained from FPS  
and CT SDE*

### *Individual School Projections*

**Geolocated  
Birth Data**

*Obtained from CT  
DPH and address  
matched*

**Geolocated  
Enrollment  
Data**

*Obtained from FPS  
and address matched*

## Projection Assumptions

Several projection models are developed by applying different persistency ratios to building blocks

**5-Year  
Average**

**3-Year  
Average**

**3-Year  
Weighted**

**Blended**

## Demographic and Housing Data

Used to inform model selection and birth projections

**Unemployment  
(Town, Region)**

**Housing Permit  
Activity**

**Home Sales  
(1-family,  
condos)**

**Women of Child-  
Bearing Age +  
Fertility Rates**

**Population  
Projections &  
Development  
Capacity**



# Persistency Ratios

- Persistency ratios are calculated from historic enrollment data to determine growth or loss in a class as it progresses through school system
- Persistency ratios account for the various external factors affecting enrollments, including housing characteristics, residential development, economic conditions, student transfers in and out of the system, and student mobility
- Persistency Ratio of 1.0 means cohort size remains the same; 1.05 means the cohort size increases by 5%, or a cohort of 100 grows to 105 the following year
- Changes in population, housing stock and tenure, and economic conditions help explain persistency ratios

School Year	K	1	2	3	4	5	6
2011-12	800	785	735	810	763	851	843
2012-13	803	841	774	742	820	770	863
2013-14	723	763	858	778	749	824	780
2014-15	686	751	714	870	782	756	808
2015-16	649	693	759	759	873	774	765
2016-17	641	676	702	775	751	886	787
2017-18	631	674	697	719	771	743	893

The table to the left shows how a grade cohort grows from year to year, indicating persistency ratios over 1.0. This accounts for the variety of external factors that affect enrollments, including home sales, residential development and student transfers into and out of the system



# Persistence Ratios

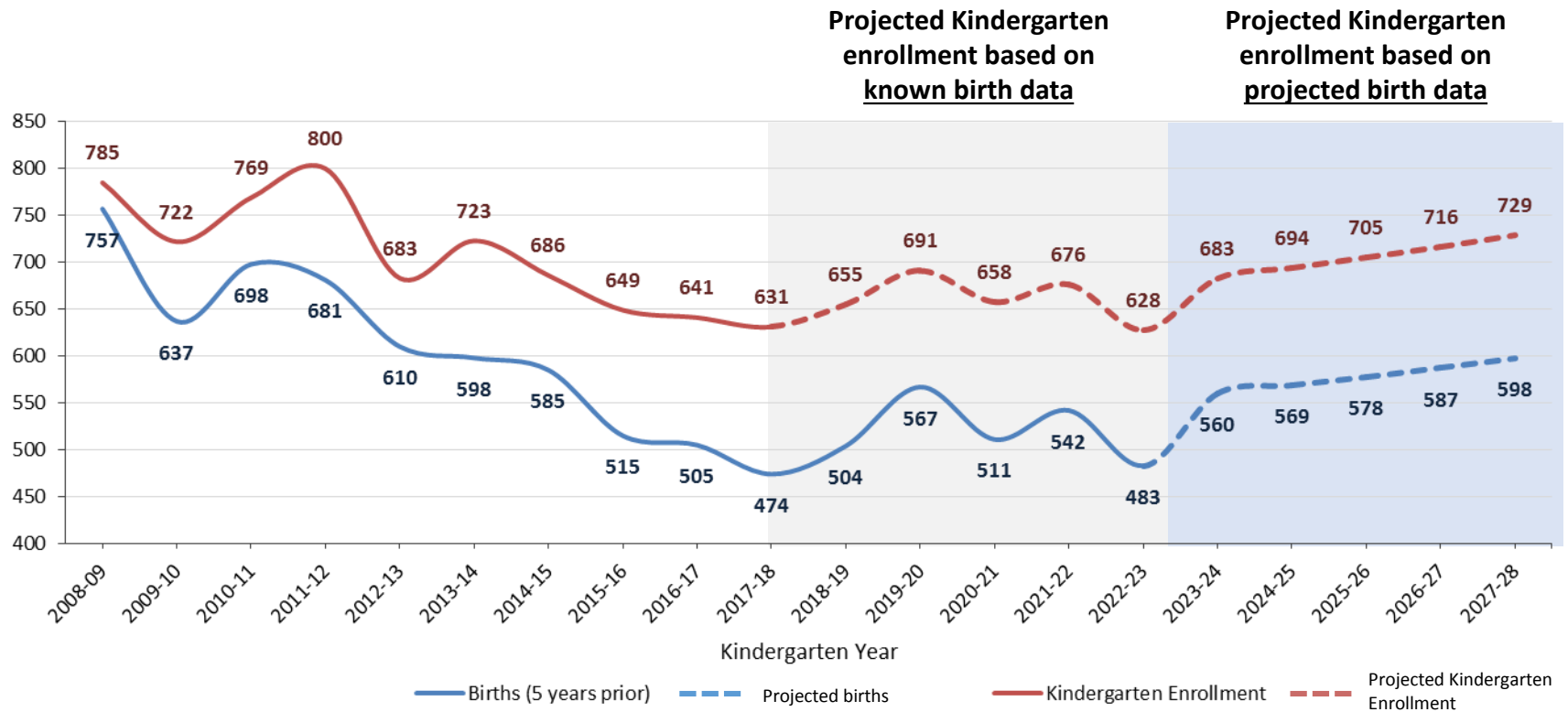
Kindergarten through 12th Grade Persistence Ratios by School Year  
2002-2003 to 2017-18

Year	Birth-K	K-1	1-2	2-3	3-4	4-5	5-6	6-7	7-8	8-9	9-10	10-11	11-12	Est. of Migration
2002-03		1.0367	1.0127	1.0056	1.0030	1.0000	1.0123	0.9958	1.0000	0.9213	0.9715	0.9728	1.0109	0.27%
2003-04		1.0388	1.0105	0.9972	0.9834	0.9760	0.9871	1.0046	0.9789	0.9485	0.9984	0.9780	0.9795	-1.22%
2004-05		1.0013	1.0097	1.0013	0.9734	1.0154	1.0108	1.0174	1.0015	0.9497	0.9885	0.9836	1.0150	0.31%
2005-06	0.9558	1.0577	0.9899	0.9822	0.9948	0.9899	1.0097	1.0061	1.0043	0.9849	0.9652	0.9750	0.9799	-0.23%
2006-07	1.0579	1.0062	0.9839	1.0281	1.0209	1.0013	1.0174	0.9945	1.0000	0.9986	0.9508	1.0047	0.9778	1.06%
2007-08	1.0839	1.0328	1.0037	1.0366	1.0409	1.0233	1.0078	1.0114	1.0152	0.9985	0.9957	0.9919	0.9922	2.30%
2008-09	1.0370	1.0204	0.9929	1.0087	0.9951	1.0072	1.0094	1.0065	1.0282	0.9620	0.9803	0.9772	1.0163	0.87%
2009-10	1.1334	1.0166	1.0027	1.0119	1.0123	1.0024	1.0118	1.0146	1.0128	0.9822	0.9746	0.9969	1.0190	1.09%
2010-11	1.1017	1.0263	1.0125	1.0093	0.9941	1.0048	1.0049	0.9883	1.0026	0.9861	0.9832	0.9957	1.0233	0.04%
2011-12	1.1747	1.0208	0.9919	1.0025	1.0039	1.0035	1.0157	0.9951	1.0166	0.9727	0.9576	0.9986	1.0087	0.63%
2012-13	1.1197	1.0513	0.9860	1.0095	1.0123	1.0092	1.0141	1.0166	1.0085	0.9709	0.9906	1.0214	1.0242	1.18%
2013-14	1.2090	1.0293	1.0202	1.0052	1.0094	1.0049	1.0130	0.9873	1.0093	0.8936	0.9436	0.9932	0.9974	0.46%
2014-15	1.1726	1.0387	1.0114	1.0140	1.0064	1.0093	0.9806	1.0128	0.9988	0.9225	1.0014	1.0089	0.9959	0.35%
2015-16	1.2602	1.0102	1.0107	1.0267	1.0034	0.9885	1.0119	1.0087	1.0063	0.9201	0.9662	0.9919	0.9761	0.72%
2016-17	1.2693	1.0416	1.0130	1.0211	1.0068	1.0149	1.0168	1.0078	0.9877	0.9258	0.9949	1.0104	1.0313	0.91%
2017-18	1.3312	1.0515	1.0311	1.0242	0.9948	1.0109	1.0079	0.9886	1.0208	0.9466	0.9796	0.9949	1.0308	0.75%

- Relatively stable in-migration of between 0% and 1% over the last decade
- Decreasing number of births over the last decade, but a growing birth-to-k ratio
  - Indicates a greater proportion of kindergarteners are being born outside of Fairfield than in the past



# Birth and Kindergarten Trends



- Kindergarten enrollment has declined by about 20% over the last ten years
- Corresponding birth cohorts have declined by 37% over the same time period
- Rising Birth-to-K ratio indicates that a growing proportion of kindergarteners who enroll in Fairfield Public Schools were born elsewhere



# Birth and Kindergarten Trends

## Birth-to-K Ratios in Fairfield and other Fairfield County Districts

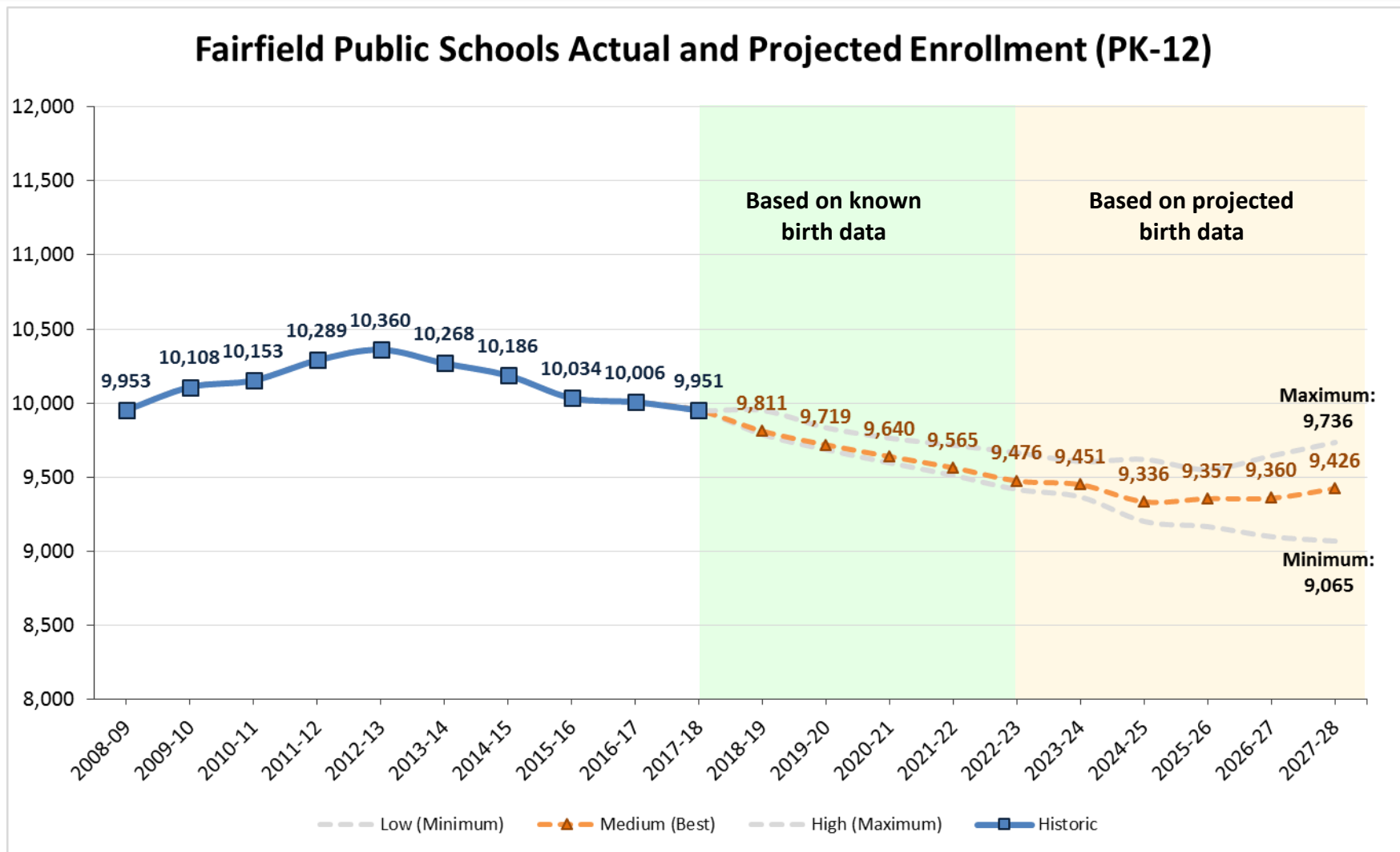
School Year	Fairfield	Ridgefield	Trumbull	Weston	Wilton
2008-09	1.0370	1.2073	1.1663	1.7292	1.5046
2009-10	1.1334	1.2299	1.2025	1.6289	1.6429
2010-11	1.1017	1.4137	1.1473	1.5143	1.6404
2011-12	1.1747	1.3377	1.1629	1.8837	1.5714
2012-13	1.1197	1.3668	1.1381	1.5972	1.6048
2013-14	1.2090	1.6957	1.3415	1.9155	1.7063
2014-15	1.1726	1.4921	1.3474	1.9718	1.7945
2015-16	1.2602	1.6095	1.5106	2.0328	1.8015
2016-17	1.2693	1.6802	1.5669	2.6122	1.8926
2017-18	1.3312	1.9216	1.5495	1.7937	1.9537

- Rising birth-to-kindergarten ratio documented in districts across Fairfield County
- Direct correlation between size of birth cohort and birth-to-K ratio. As the number of births has decreased, the birth-to-K ratio has increased
- Indicates that a growing proportion of kindergarteners were born elsewhere and moved prior to enrolling in Kindergarten





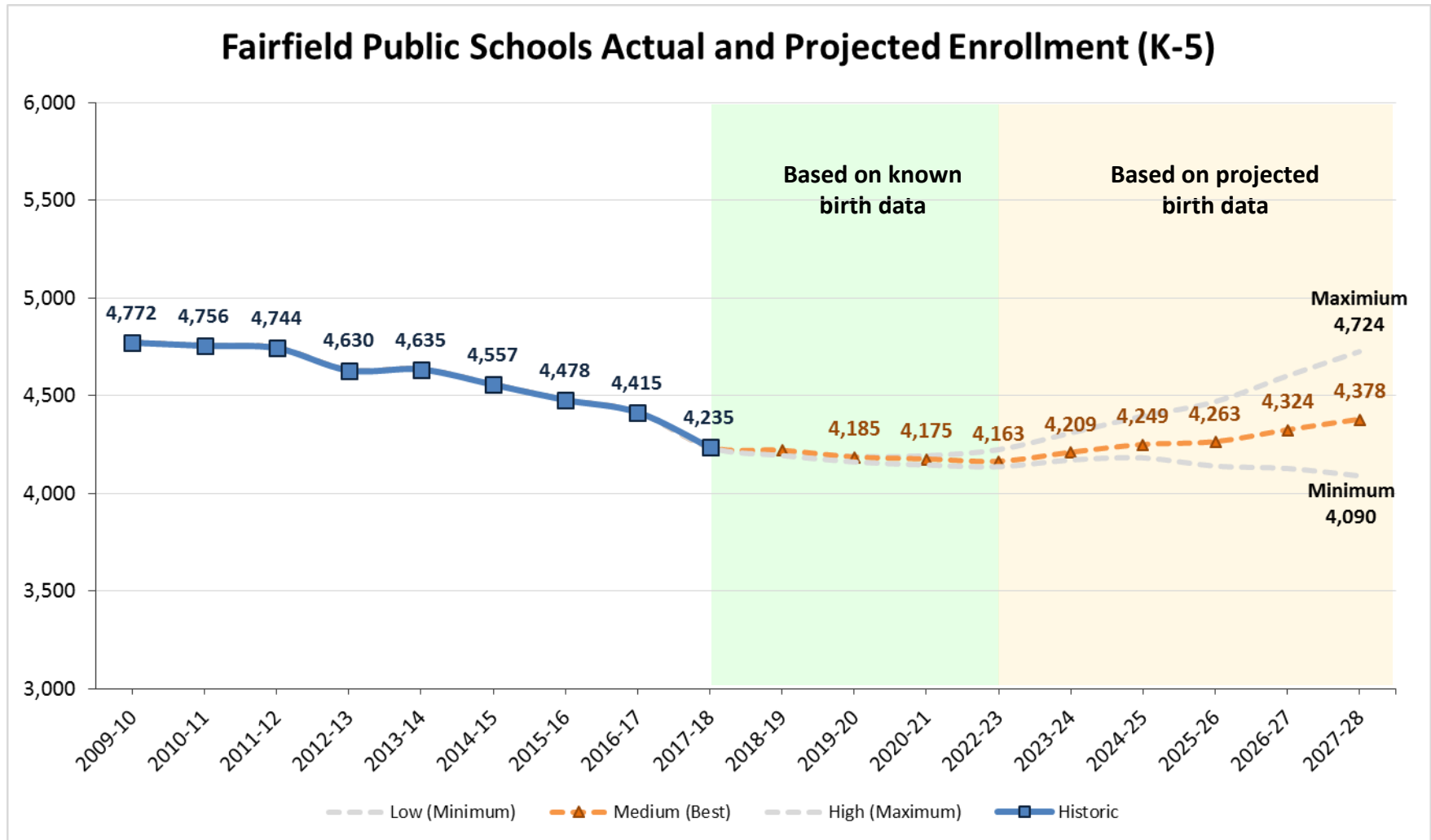
# District Projections



**Medium Projections are supported by demographic, housing, and economic data**



# K-5 Projections



**Medium Projections are supported by demographic, housing, and economic data**



# Facilities

School	Total Full-Size Classrooms <sup>2</sup>	Total Full-Size Instructional Classrooms	K-5 Grade Level Instruction	CLC	Pre-K <sup>3</sup>	K-5 Operational Capacity
Burr	28	24	22	1	1	470
Dwight	21	18	17	1	0	365
Holland Hill <sup>1</sup>	28	24	24	0	0	504
Jennings	23	18	17	1	0	365
McKinley	30	24	24	0	0	504
Mill Hill (without portables) <sup>2</sup>	20	13	13	0	0	273
North Stratfield	28	24	24	0	0	504
Osborn Hill	30	24	22	2	0	478
Riverfield	27	24	24	0	0	504
Roger Sherman	24	22	22	0	0	462
Stratfield	27	24	22	0	2	462
<b>Total All Schools</b>	<b>286</b>	<b>239</b>	<b>231</b>	<b>5</b>	<b>3</b>	<b>4,891</b>

1. Based on the planned capacity from the new Holland Hill Ed Spec

2. The five portable classrooms were deducted from the capacity at Mill Hill

3. Pre-K classrooms are deducted from the K-5 operational capacity

- Operational capacity is educationally driven – aligns with district Ed. Spec. with all portable classrooms removed
- Portable classrooms were deducted from the operational capacity at Mill Hill
- Takes into account the placement of district-wide programs such as CLC and Pre-K



# Facility Utilization

## K-5 Utilization Projections (Operational Capacity) \*

School	2018-19	2019-20	2020-21	2021-22	2022-23	2023-24	2024-25	2025-26	2026-27	2027-28	Operational capacity
Burr	80.4%	78.1%	77.4%	77.4%	75.5%	76.0%	76.2%	76.4%	78.5%	78.5%	470
Dwight	91.2%	92.3%	89.3%	85.2%	84.7%	87.9%	85.2%	85.5%	89.9%	96.2%	365
Holland Hill <sup>1</sup>	74.4%	76.4%	77.0%	76.2%	78.8%	80.0%	80.8%	79.8%	79.4%	80.2%	504
Jennings	81.4%	81.4%	78.9%	79.2%	79.7%	82.2%	83.0%	81.4%	81.9%	83.3%	365
McKinley	85.7%	84.1%	82.3%	83.3%	78.4%	81.0%	81.0%	81.3%	82.5%	82.9%	504
Mill Hill (Operational Capacity)	124.9%	127.1%	132.2%	134.4%	134.1%	134.8%	137.0%	140.7%	139.9%	139.9%	273
Mill Hill (Functional Capacity)	90.2%	91.8%	95.5%	97.1%	96.8%	97.4%	98.9%	101.6%	101.1%	101.1%	378
North Stratfield	75.2%	74.2%	74.0%	76.6%	77.2%	76.2%	77.6%	77.4%	77.4%	77.8%	504
Osborn Hill	83.9%	79.7%	77.4%	78.7%	79.1%	77.8%	79.3%	80.3%	82.8%	83.5%	478
Riverfield	82.7%	83.3%	84.5%	87.5%	90.3%	90.3%	91.5%	91.5%	93.1%	91.7%	504
Roger Sherman	101.5%	101.9%	105.2%	102.4%	98.1%	100.6%	101.5%	100.6%	101.9%	104.3%	462
Stratfield	85.9%	82.7%	81.8%	82.0%	81.2%	81.4%	84.0%	86.4%	87.4%	89.8%	462
<b>Total</b>	<b>86.3%</b>	<b>85.6%</b>	<b>85.4%</b>	<b>85.7%</b>	<b>85.1%</b>	<b>86.1%</b>	<b>86.9%</b>	<b>87.2%</b>	<b>88.4%</b>	<b>89.5%</b>	<b>4,891</b>

1. Based on the capacity of the New Holland Hill School (504 students)

\* Operational capacity assumes all portable classrooms are removed

- Utilization based on operational capacity and enrollment projections
- High utilization projected to continue at Mill Hill and Roger Sherman over the next ten years.
- Using Mill Hill's functional capacity (378) rather than operational capacity, utilization would still be over 95% for eight of the next ten years, and over 100% for the final three years of the projections horizon



# Mill Hill Construction Project

## **“No Build” Alternatives \***

In order to meet the Ed. Spec. without new construction, Mill Hill would need to:

1. Replace portable classrooms with new trailers
2. Utilize hallways and common areas (stage, etc.) to make up for the lack of support spaces in the main building – remove portables
3. Redistrict ~100 students out of Mill Hill – remove portables

*\* If done in isolation, none of the above alternatives would address racial imbalance at McKinley or overcrowding at Roger Sherman*



# Mill Hill Construction Project

## Construction Project

- If comprehensive redistricting is undertaken to address overcrowding and racial imbalance, a 504 student school is needed at Mill Hill
- Maintains current K-5 neighborhood-based model, but would redistrict between 15% and 20% of students



# Mill Hill Construction Project

## Other Considerations

- In order to maximize reimbursement from the State for the School Construction Grant, District needs to hit the target capacity for the new school
- Additional students need to be moved into Mill Hill District in order to support a 504 student school



# Questions?

---





Board of Education Special Meeting Agenda  
501 Kings Highway East, Superintendent's Conference Room

**Tuesday, April 24, 2018**

**7:00 PM**

1. Call to Order and Roll Call

2. Pledge of Allegiance

3. Board Self-Evaluation

**Recommended Motion:** "that the Board of Education hereby moves to enter into Executive Session in accordance with CGS §1-200(6A) to discuss the Board's self-evaluation and invite Mr. Robert Rader as moderator "

4. Adjournment

**RELOCATION POLICY NOTICE**

*The Fairfield Public Schools System provides services to ensure students, parents and other persons have access to meetings, programs and activities. The School System will relocate programs in order to ensure accessibility of programs and activities to disabled persons. To make arrangements please contact Pupil & Special Education Services, 501 Kings Highway East, Fairfield, CT 06825, Telephone: (203) 255-8379*

3/1/2018

FAIRFIELD PUBLIC SCHOOLS ENROLLMENT - ELEMENTARY

	PRE-K	KIND	1	2	3	4	5	TOTAL
<b>Burr</b>	18	19	23	23	19	24	21	
	18	19	22	23	18	25	21	
		19	20	20	20	23	20	
	36	57	65	66	57	72	62	415
<b>Dwight</b>		19	18	19	19	19	17	
		20	17	19	20	19	16	
			17	18	21	20	17	
		39	52	56	60	58	50	315
<b>Holland Hill</b>		22	15	22	22	21	25	
		22	16	22	22	21	24	
		19	17	22	21	22	24	
		63	48	66	65	64	73	379
<b>Jennings</b>		20	21	16	18	21	23	
		19	22	16	20	19	21	
				16	19	20		
		39	43	48	57	60	44	291
<b>McKinley</b>		19	18	18	20	19	19	
		17	18	16	19	19	20	
		17	18	18	18	20	19	
			18	16	19	18	19	
		53	90	68	76	76	77	440
<b>Mill Hill</b>		19	19	21	21	17	20	
		18	20	21	21	16	21	
		19	20	21	20	17	20	
		56	59	63	62	50	61	351
<b>No. Stratfield</b>		22	18	18	24	25	23	
		22	19	17	22	24	22	
		21	19	18	23	24	22	
		65	56	53	69	73	67	383
<b>Osborn Hill</b>		18	21	20	21	21	21	
		18	22	20	22	21	21	
		19	21	20	21	21	21	
		17				21	21	
		72	64	60	64	84	84	428
<b>Riverfield</b>		18	19	18	24	22	24	
		18	19	17	24	25	24	
		17	20	18	24	23	23	
		19		18				
		72	58	71	72	70	71	414

1-Mar-2018

FAIRFIELD PUBLIC SCHOOLS ENROLLMENT - ELEMENTARY

	PRE-K	KIND	1	2	3	4	5	TOTAL
<b>Sherman</b>		21	20	21	22	24	21	
		20	21	22	22	23	20	
		20	21	22	22	24	22	
			21	20		23	21	
		61	83	85	66	94	84	473
<b>Stratfield</b>	13	19	22	20	23	24	25	
	11	21	22	20	25	24	25	
ECC PK Program	12	22	23	21	24	24	25	
ECC PK Program	8							
	44	62	67	61	72	72	75	453
<b>ECC</b>	128							128
<b>TOTAL PRE-K-5</b>	208	639	685	697	720	773	748	4,470

FAIRFIELD PUBLIC SCHOOLS ENROLLMENT - SECONDARY

	6	7	8	9	10	11	12	TOTAL
<b>Fairfield Woods</b>	345	309	295					949
<b>Ludlowe</b>	325	243	284					852
<b>Tomlinson</b>	222	223	206					651
<b>TOTAL 6-8</b>	892	775	785					2,452
<b>FWHS</b>				374	353	395	383	1,505
<b>Walter Fitzgerald Campus</b>				4	0	3	6	13
<b>FLHS</b>				378	371	370	386	1,505
<b>Walter Fitzgerald Campus</b>				3	3	4	14	24
<b>TOTAL 9-12</b>				759	727	772	789	3,047

SUMMARY	Pre-K - 5	6 - 8	9 - 12	TOTAL
Current:	4,470	2,452	3,047	9,969
Difference: Current - September 29, 2017	59	(2)	(4)	53
Sept 29, 2017 (For Oct 1)	4,411	2,454	3,051	9,916

FPS Students in FPS Schools:	9,969
FPS Students in Outplaced Schools:	97
FPS Students in Magnet Schools*:	78
Total Including OP and Magnet:	10,144

\*Excludes Students that are dual-enrolled in Fairfield Public Schools and RCA or Aqua half-day magnet programs. These students are included in the FPS Schools count (not the magnet count).

Please inform the Supt. Office of any discrepancies at 255-8371.

4/1/2018

FAIRFIELD PUBLIC SCHOOLS ENROLLMENT - ELEMENTARY

	PRE-K	KIND	1	2	3	4	5	TOTAL
<b>Burr</b>	18	19	23	23	19	24	21	
	17	19	22	23	18	25	21	
		19	20	20	20	23	20	
	35	57	65	66	57	72	62	414
<b>Dwight</b>		19	18	19	19	19	17	
		20	17	19	20	19	16	
			17	18	21	20	17	
		39	52	56	60	58	50	315
<b>Holland Hill</b>		22	16	22	22	21	25	
		22	16	22	22	21	24	
		19	16	22	21	22	24	
		63	48	66	65	64	73	379
<b>Jennings</b>		20	21	16	18	21	23	
		19	22	16	20	19	21	
				16	19	20		
		39	43	48	57	60	44	291
<b>McKinley</b>		19	18	18	20	19	19	
		17	18	16	19	19	20	
		18	18	18	18	20	19	
			18	16	19	18	19	
		54	90	68	76	76	77	441
<b>Mill Hill</b>		19	19	21	21	17	20	
		17	20	21	21	16	21	
		19	20	21	20	17	20	
		55	59	63	62	50	61	350
<b>No. Stratfield</b>		22	18	18	24	25	23	
		22	19	17	22	24	22	
		21	19	18	23	24	22	
		65	56	53	69	73	67	383
<b>Osborn Hill</b>		18	21	20	21	21	21	
		18	22	20	22	21	20	
		19	21	20	21	21	20	
		17				21	21	
		72	64	60	64	84	82	426
<b>Riverfield</b>		18	19	18	24	22	23	
		18	19	17	24	25	24	
		17	20	17	24	23	23	
		18		18				
		71	58	70	72	70	70	411

1-Apr-2018

FAIRFIELD PUBLIC SCHOOLS ENROLLMENT - ELEMENTARY

	PRE-K	KIND	1	2	3	4	5	TOTAL
<b>Sherman</b>		21	20	21	22	24	21	
		20	21	22	22	23	20	
		20	21	22	22	24	22	
			21	19		23	20	
		61	83	84	66	94	83	471
<b>Stratfield</b>	14	19	23	20	22	23	25	
	11	21	22	20	25	24	25	
ECC PK Program	13	22	23	21	24	24	26	
ECC PK Program	9							
	47	62	68	61	71	71	76	456
<b>ECC</b>	129							129
<b>TOTAL PRE-K-5</b>	211	638	686	695	719	772	745	4,466

FAIRFIELD PUBLIC SCHOOLS ENROLLMENT - SECONDARY

	6	7	8	9	10	11	12	TOTAL
<b>Fairfield Woods</b>	346	310	294					950
<b>Ludlowe</b>	324	243	284					851
<b>Tomlinson</b>	223	224	207					654
<b>TOTAL 6-8</b>	893	777	785					2,455
<b>FWHS</b>				374	352	397	384	1,507
<b>Walter Fitzgerald Campus</b>				4	0	4	6	14
<b>FLHS</b>				378	370	370	387	1,505
<b>Walter Fitzgerald Campus</b>				4	3	4	13	24
<b>TOTAL 9-12</b>				760	725	775	790	3,050

SUMMARY	Pre-K - 5	6 - 8	9 - 12	TOTAL
Current:	4,466	2,455	3,050	9,971
Difference: Current - September 29, 2017	55	1	(1)	55
Sept 29, 2017 (For Oct 1)	4,411	2,454	3,051	9,916

FPS Students in FPS Schools:	9,971
FPS Students in Outplaced Schools:	97
FPS Students in Magnet Schools*:	78
Total Including OP and Magnet:	10,146

\*Excludes Students that are dual-enrolled in Fairfield Public Schools and RCA or Aqua half-day magnet programs. These students are included in the FPS Schools count (not the magnet count).

Please inform the Supt. Office of any discrepancies at 255-8371.